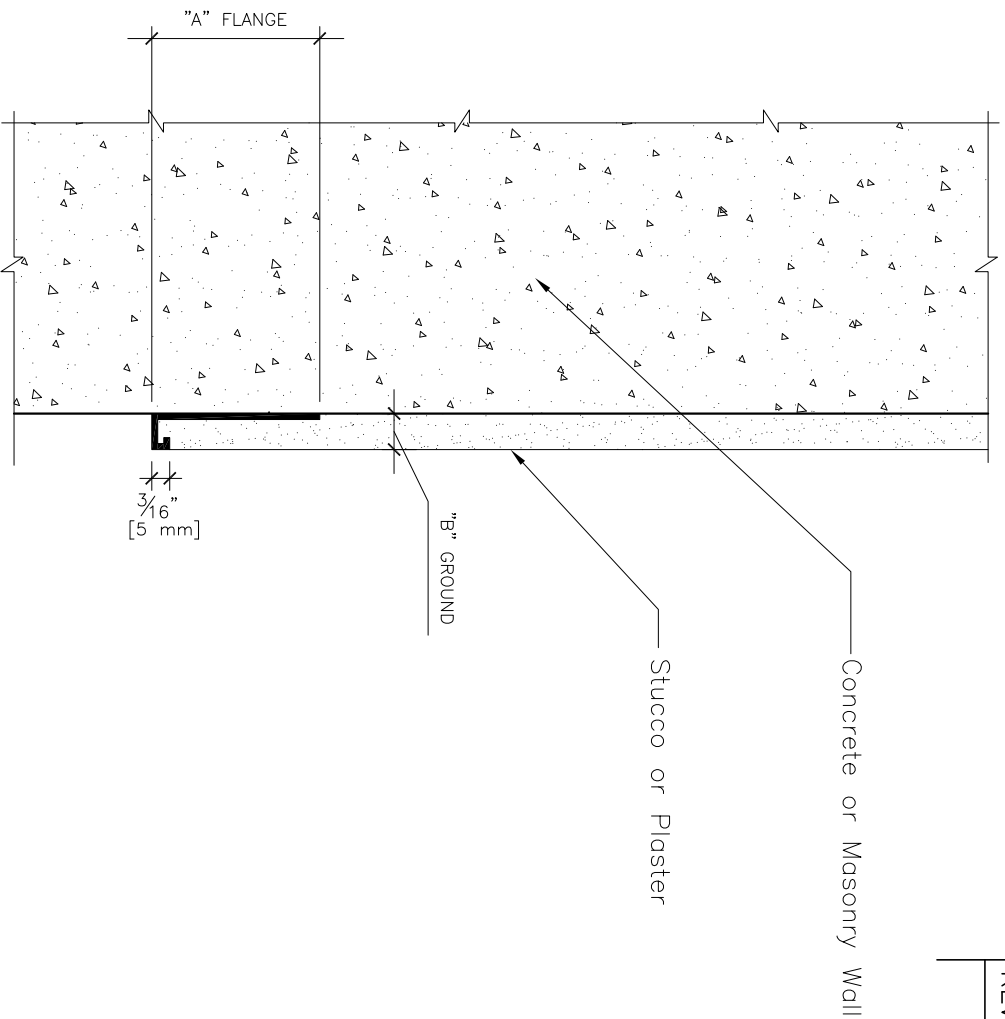


REVISION HISTORY			
REV	DESCRIPTION	DATE	APPROVED



Product Submittal	Product Number	Dimension "A" Flange	Dimension "B" Ground
	1038X	1 1/4" [44 mm]	3/8" [10 mm]
	1050X	1 1/4" [44 mm]	1/2" [13 mm]
	1075X	1 1/4" [44 mm]	3/4" [19 mm]
	1078X	1 1/4" [44 mm]	7/8" [22 mm]
	1025	1 3/4" [44 mm]	1/4" [6 mm]
	1038	1 3/4" [44 mm]	3/8" [10 mm]
	1050	1 3/4" [44 mm]	1/2" [13 mm]
	1058	1 3/4" [44 mm]	5/8" [16 mm]
	1075	1 3/4" [44 mm]	3/4" [19 mm]
	1078	1 3/4" [44 mm]	7/8" [22 mm]
	1100-0	1 3/4" [44 mm]	1" [25 mm]
	1125-0	1 3/4" [44 mm]	1 1/4" [32 mm]
	1150-0	1 3/4" [44 mm]	1 1/2" [38 mm]
	1200-0	1 3/4" [44 mm]	2" [51 mm]

## Casing Bead for Stucco and Plaster

SCALE: 6" = 1'-0"

### NOTES:

1. Typical installation shown.
2. Actual installation shall meet all local building codes and ASTM standards.
3. All butt joints, intersections, ends and corners shall be caulked at the time of installation using an elastomeric sealant, such as Plastic Components "Ultra Tech" (PC-ULTW).

NAME	DATE	PLASTIC COMPONENTS, Inc.	
DRAWN JKW	11/30/2011	9051 NW 97th Terrace ~ Miami, FL 33178 800-327-7077 ~ www.plasticcomponents.com	
CHECKED		TITLE	
ENG APPR		Casing Bead	
MGR APPR		SIZE DWG NO	
		A	Casing Bead
		FILENAME:	Casing Bead - Stucco.dwg
		SCALE:	WEIGHT:
			SHEET 1 OF 1
		UNLESS OTHERWISE SPECIFIED DIMENSIONS ARE IN INCHES ANGLES ±X.X°	REV
		2 PL ±X.XX 3 PL ±X.XXX	