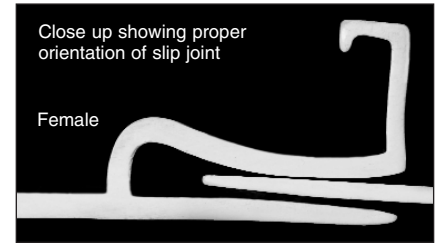
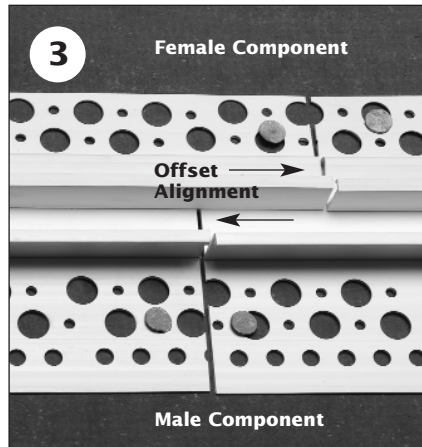
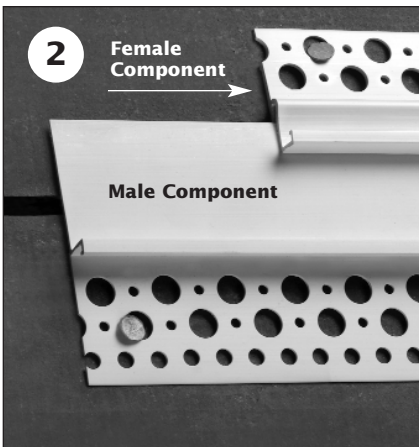


**for Stucco and Plaster**

Our 2-piece expansion/slip joints allow for two-dimensional movement and are designed to expand and contract where severe movement is anticipated. They are often used to join two different types of construction, and provide an aesthetic looking reveal to the detail.

Installation and attachment shall be in accordance with ASTM C1063, ASTM C926, the Portland Cement Plaster (stucco) Manual, local building codes, and industry standards.



**To install**

Assemble together the two-piece component (corresponding male and female components) to allow for the engineered structural movement of the designed detail (Figure 1).

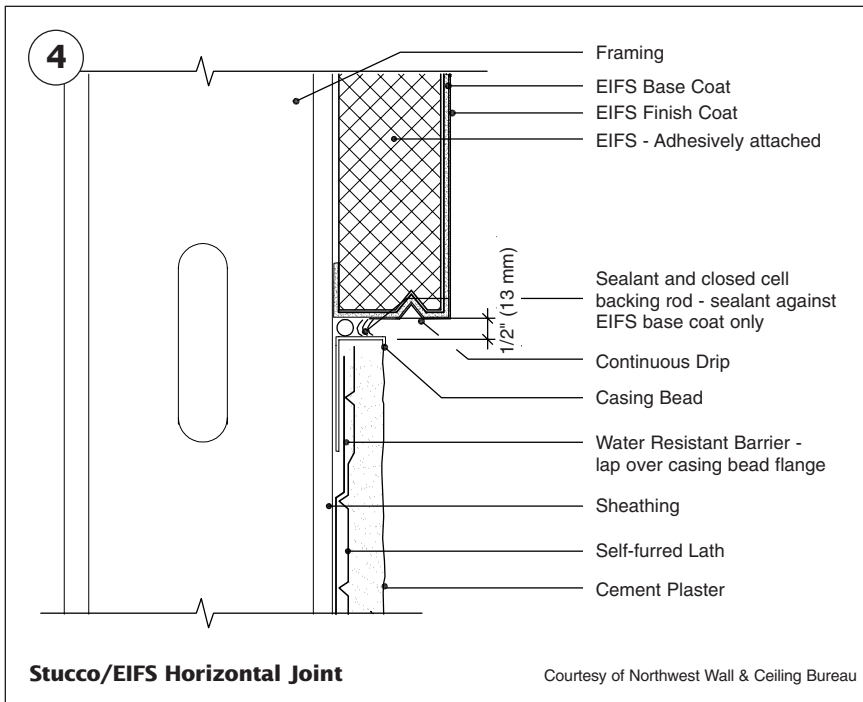
Horizontal applications: Install the male component on the bottom of the assembly (Figure 2).

Continuous applications: The ends of the components shall be assembled in an offset position to stagger the butt joint (Figure 3).

Embed all butt joints, intersections, and ends in a caulk-sealant at time of installation. A lapped moisture barrier or flashing must be installed behind any two-piece joints (Figure 4).

All lath applications shall be cut and attached at each side of the component. Lath must run continuously through, or behind the component (Figure 4).

Attach component to substrate with specified fastener, or tie wire to lath every 6 to 8 inches to isolate adjacent free-moving plaster panels.



**Stucco/EIFS Horizontal Joint**

Courtesy of Northwest Wall & Ceiling Bureau

**Note** Caulk all butt joints, ends, angles, corners, and intersections at time of installation.

*Instrucciones en español al dorso*

