

# Stucco and Plaster

Section: 09200

## Window/Door Casing Bead

Product Number	Dimension A Window/Door Casing Bead	Back Flange Dimension B	Pieces in Box
1058-50	5/8" (16 mm) ground	1/2" (13 mm)	50
1058-58	5/8" (16 mm) ground	5/8" (16 mm)	50
1058-75	5/8" (16 mm) ground	3/4" (19 mm)	50
1058-78	5/8" (16 mm) ground	7/8" (22 mm)	50
1078-50	7/8" (22 mm) ground	1/2" (13 mm)	50
1078-58	7/8" (22 mm) ground	5/8" (16 mm)	50

10' (3 m) Lengths

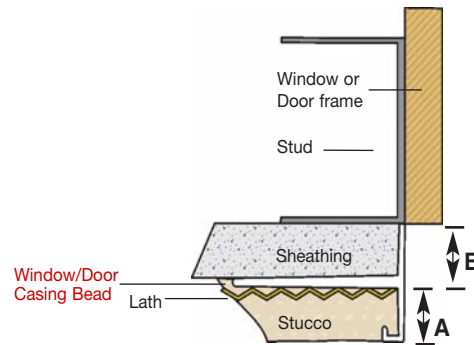


### Application:

Creates a decorative reveal at the termination point of window and door openings.

### Specification:

Window/Door Casing Bead shall be Plastic Components, Inc. #\_\_\_\_\_ series. All exterior accessories shall conform to ASTM standards D1784, C1063 and D4216. All products shall be third party tested to meet ASTM standard D4216 and be Canadian Code Compliant. They shall be used where specified by the architect and installed per industry standards.



*All butt joints, intersections and ends shall be caulked at the time of installation using an elastomeric sealant, such as Plastic Components' Ultra-Tech<sup>TM</sup> (PC-ULTW).*