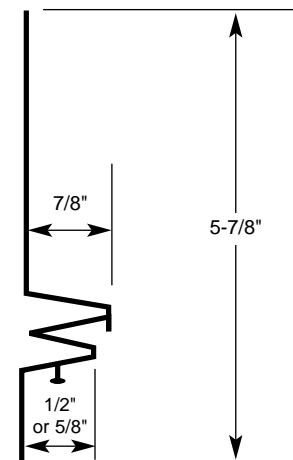
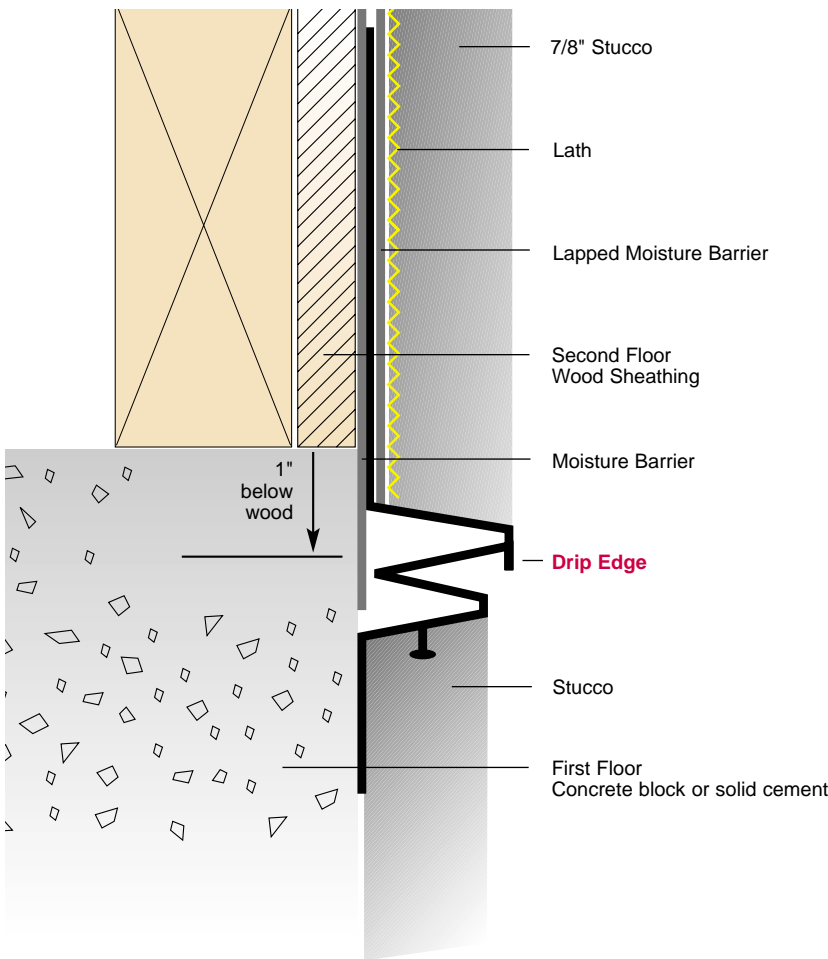




**2078-50, 2078-58
Floor Line Control Bead
with Drip Edge**

Plastic Components' Floor Line Control Bead with Drip Edge functions as a horizontal control joint and a moisture control device where two dissimilar materials, such as wood and concrete meet. A typical application would be first floor concrete masonry unit block construction and a wood framed second floor.

The component allows moisture to migrate down, shedding it away from the wall. Its unique drip edge helps prevent migrating moisture from getting into the V-groove of the control joint, and keeps it away from the surface area of the first floor wall.



Product Number	Ground (Inches)	Description	Pieces in Box
2078-50	1/2" (12 mm)	Control Bead w/ Drip Edge	15
2078-58	5/8" (16 mm)	3-1/2" (89 mm) unpunched nailing flange	15

NEW!

10' (3 m) Lengths

Specification

Floor Line Control Beads shall be Plastic Components, Inc. # _____. All exterior accessories shall be of PVC material conforming to ASTM standards D1784, C926, C1063 and D4216.

They shall be used where specified by an architect and installed per industry standards.

Note Caulk all butt joints, ends, angles, corners, and intersections at time of installation.

