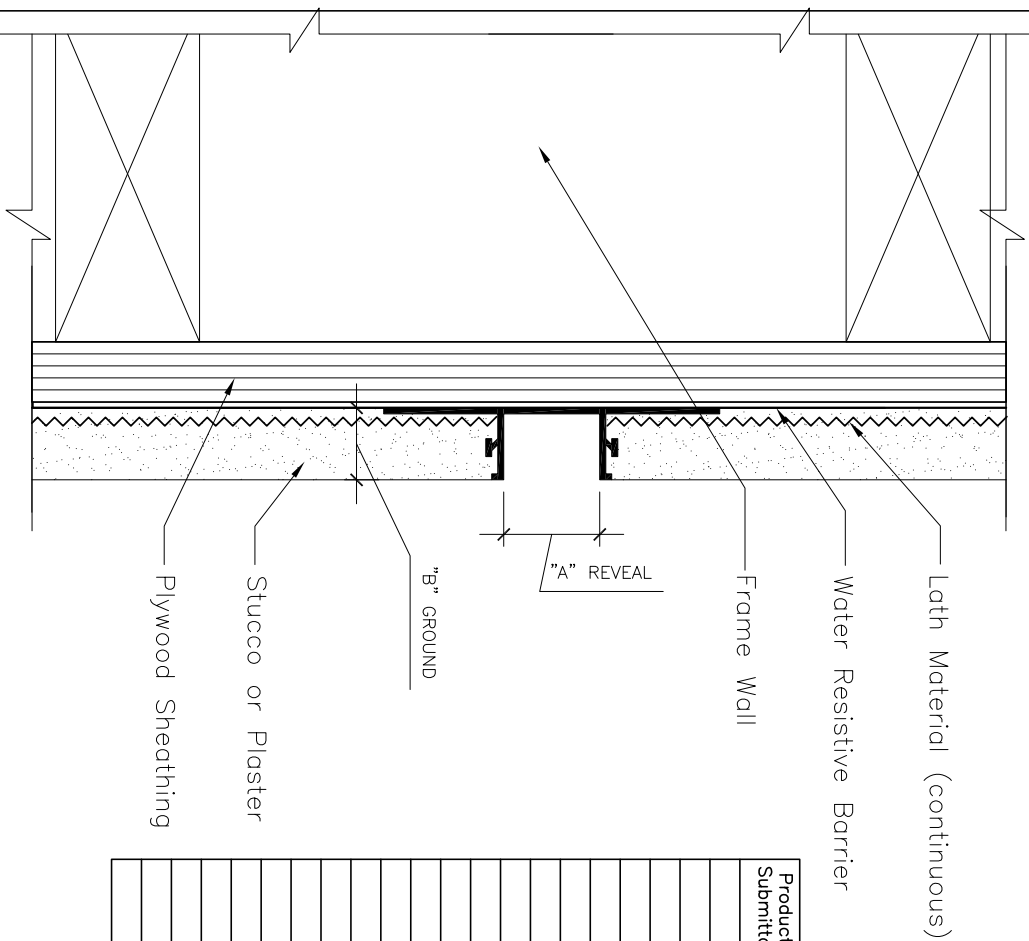


REVISION HISTORY			
REV	DESCRIPTION	DATE	APPROVED



ULTRA-TRAC System Plaster Reveal

SCALE: 6" = 1'-0"

Frame Construction

NOTES:

1. Typical installation shown.
2. Actual installation shall meet all local building codes and ASTM standards.
3. All butt joints, intersections, ends and corners shall be caulked at the time of installation using an elastomeric sealant, such as Plastic Components "Ultra Tech" (PC-ULTW).

Product Submittal	Product Number	Dimension "A" Reveal	Dimension "B" Ground	Product Submittal	Product Number	Dimension "A" Reveal	Dimension "B" Ground
	707-25	1/2" [13 mm]	1/4" [6 mm]		710-25	1 1/2" [38 mm]	1/4" [6 mm]
	707-38	1/2" [13 mm]	3/8" [10 mm]		710-38	1 1/2" [38 mm]	3/8" [10 mm]
	707-50	1/2" [13 mm]	1/2" [13 mm]		710-50	1 1/2" [38 mm]	1/2" [13 mm]
	707-58	1/2" [13 mm]	5/8" [16 mm]		710-58	1 1/2" [38 mm]	5/8" [16 mm]
	707-75	1/2" [13 mm]	3/4" [19 mm]		710-75	1 1/2" [38 mm]	3/4" [19 mm]
	707-78	1/2" [13 mm]	7/8" [22 mm]		710-78	1 1/2" [38 mm]	7/8" [22 mm]
	708-25	3/4" [19 mm]	1/4" [6 mm]		711-25	2" [51 mm]	1/4" [6 mm]
	708-38	3/4" [19 mm]	3/8" [10 mm]		711-38	2" [51 mm]	3/8" [10 mm]
	708-50	3/4" [19 mm]	1/2" [13 mm]		711-50	2" [51 mm]	1/2" [13 mm]
	708-58	3/4" [19 mm]	5/8" [16 mm]		711-58	2" [51 mm]	5/8" [16 mm]
	708-75	3/4" [19 mm]	3/4" [19 mm]		711-75	2" [51 mm]	3/4" [19 mm]
	708-78	3/4" [19 mm]	7/8" [22 mm]		712-50	2 1/2" [64 mm]	1/2" [13 mm]
	709-25	1" [25 mm]	1/4" [6 mm]		712-58	2 1/2" [64 mm]	5/8" [16 mm]
	709-38	1" [25 mm]	3/8" [10 mm]		712-75	2 1/2" [64 mm]	3/4" [19 mm]
	709-50	1" [25 mm]	1/2" [13 mm]		713-50	3" [76 mm]	1/2" [13 mm]
	709-58	1" [25 mm]	5/8" [16 mm]		713-58	3" [76 mm]	5/8" [16 mm]
	709-75	1" [25 mm]	3/4" [19 mm]		713-75	3" [76 mm]	3/4" [19 mm]
	709-78	1" [25 mm]	7/8" [22 mm]		714-50	4" [102 mm]	1/2" [13 mm]
					714-58	4" [102 mm]	5/8" [16 mm]
					714-75	4" [102 mm]	3/4" [19 mm]
					714-78	4" [102 mm]	7/8" [22 mm]

NAME	DATE	TITLE	FILENAME:	SCALE:	WEIGHT:	SHEET	REV
DRAWN	JKW	1/6/2012	PLASTIC COMPONENTS, Inc. 9051 NW 97th Terrace ~ Miami, FL 33178 800-327-7077 ~ www.plasticcomponents.com				
CHECKED							
ENG APPR							
MGR APPR							
UNLESS OTHERWISE SPECIFIED DIMENSIONS ARE IN INCHES ANGLES ±X.X°		ULTRA-TRAC System Plaster Reveal Frame Construction	ULTRA-TRAC 700 Series-frame				
2 PL ±X.XX 3 PL ±X.XXX							