

# Stone Veneer

45 YEARS  
PLASTIC PC  
COMPONENTS

Section: 09200

## Colored Termination Bead

Product Number	Ground	Dimensions/Descriptions	Pieces Per Box
1050	1/2" (13 mm)	White termination bead, 1-3/4" (44 mm) perforated flange.	75
1058	5/8" (16 mm)		75
1075	3/4" (19 mm)		75
1078	7/8" (22 mm)		75
1100	1" (25mm)		50
1050TAN	1/2" (13 mm)	Tan colored termination bead, 1-3/4" (44 mm) perforated flange.	75
1058TAN	5/8" (16 mm)		75
1075TAN	3/4" (19 mm)		75
1078TAN	7/8" (22 mm)		75
1100TAN	1" (25mm)		50
1050GRAY	1/2" (13 mm)	Gray colored termination bead, 1-3/4" (44 mm) perforated flange.	75
1058GRAY	5/8" (16 mm)		75
1075GRAY	3/4" (19 mm)		75
1078GRAY	7/8" (22 mm)		75
1100GRAY	1" (25mm)		50

10' (3 m) Lengths

Add suffix "WP" to order with weep holes. Example: 1050TANWP

### Application:

Colored termination bead provides a finished edge between stone veneer and other materials such as vinyl or cementitious siding, stucco etc.

### Specification:

Colored Termination bead will be Plastic Components, Inc. #\_\_\_\_\_. All exterior accessories shall conform to ASTM standards D1784, C1063 and D4216. All products shall be third party tested to meet ASTM standard D4216 and be Canadian Code Compliant. They shall be used where specified by the architect and installed per industry standards.



White

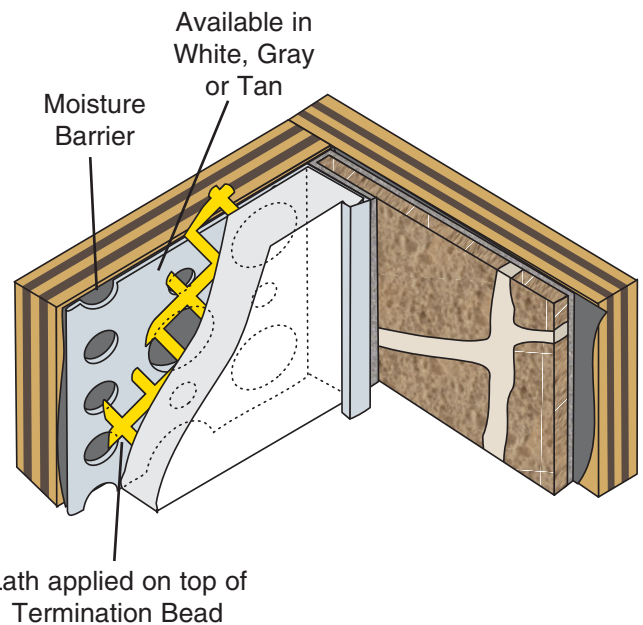
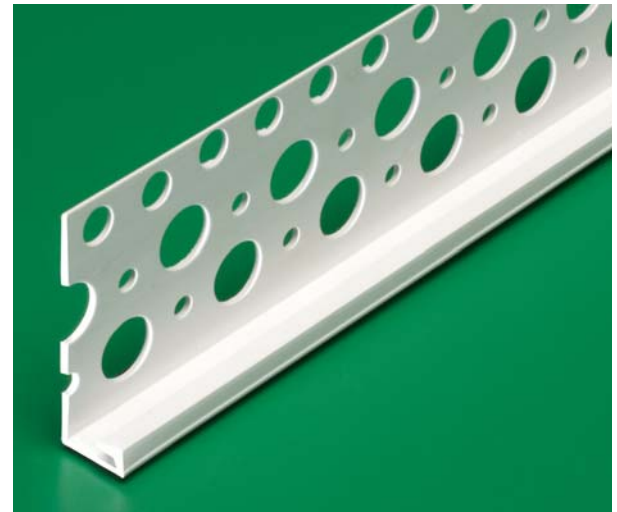


Tan



Gray

Now in  
Three  
Colors!



All butt joints, intersections and ends shall be caulked at the time of installation using an elastomeric sealant, such as Plastic Components' Ultra-Tech™ (PC-ULTW).