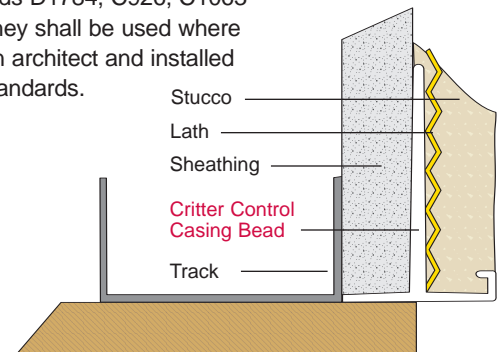
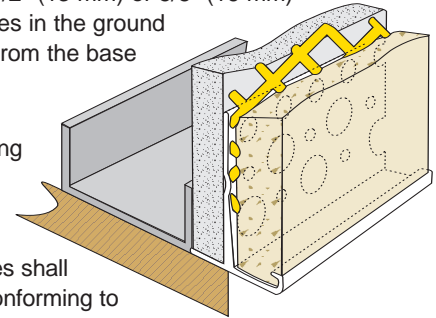


**Critter Control™ Casing Bead**  
Plastic Components' Critter Control™ casing bead is designed to terminate stucco at the base of a wall, while serving as a cap for 1/2" (13 mm) or 5/8" (16 mm) sheathing. Weep holes in the ground drain moisture away from the base of the wall.

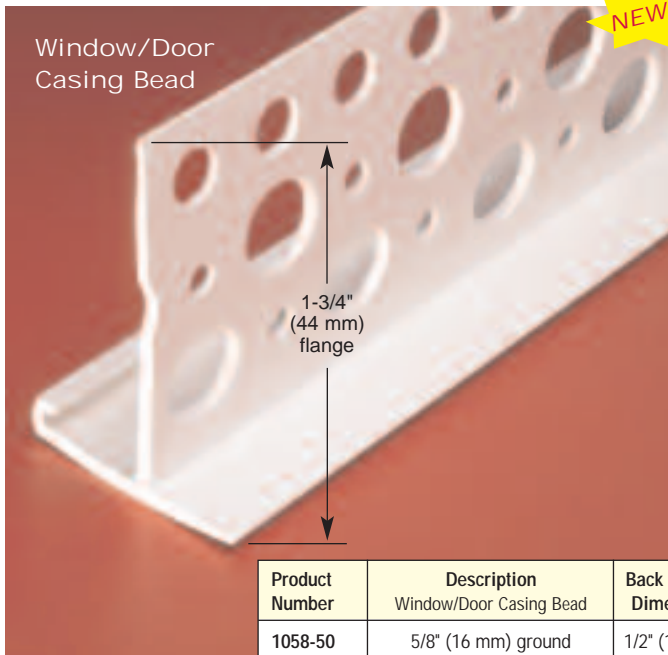
**Specification**  
Critter Control™ Casing Bead shall be Plastic Components, Inc. #105058WP series.

All exterior accessories shall be of PVC material conforming to ASTM standards D1784, C926, C1063 and D4216. They shall be used where specified by an architect and installed per industry standards.



Product Number	Description Casing Bead w/ weep holes	Back Flange Dimension	Pieces in Box
105850WP	5/8" (16 mm) weeped ground	1/2" (13 mm)	50
107550WP	3/4" (19 mm) weeped ground	1/2" (13 mm)	50
107850WP	7/8" (22 mm) weeped ground	1/2" (13 mm)	50
105858WP	5/8" (16 mm) weeped ground	5/8" (16 mm)	50
107558WP	3/4" (19 mm) weeped ground	5/8" (16 mm)	50
107858WP	7/8" (22 mm) weeped ground	5/8" (16 mm)	50

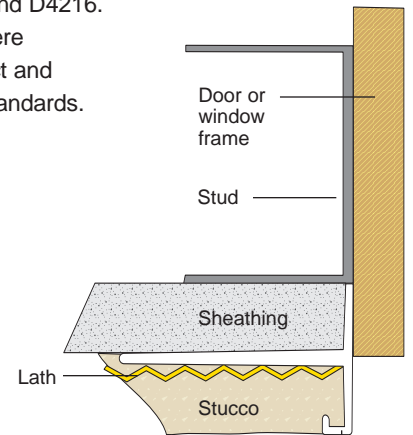
10' (3 m) Lengths



**Window/Door Casing Bead**  
Creates a decorative reveal at the termination point of window and door openings.

**Specification**  
Window/Door Casing Bead shall be Plastic Components, Inc. #105875 series. All exterior accessories shall be of PVC material conforming to ASTM standards D1784, C926, C1063 and D4216.

They shall be used where specified by an architect and installed per industry standards.



Product Number	Description Window/Door Casing Bead	Back Flange Dimension	Pieces in Box
1058-50	5/8" (16 mm) ground	1/2" (13 mm)	50
1058-58	5/8" (16 mm) ground	5/8" (16 mm)	50
1058-75	5/8" (16 mm) ground	3/4" (19 mm)	50
1058-100	5/8" (16 mm) ground	1" (25 mm)	50
1075-58	3/4" (19 mm) ground	5/8" (16 mm)	50
1075-75	3/4" (19 mm) ground	3/4" (19 mm)	50
1075-100	7/8" (22 mm) ground	1" (25 mm)	50

10' (3 m) Lengths

Window/Door Casing Bead

Note Caulk all butt joints, ends, angles, corners, and intersections at time of installation.

