

# Stucco and Plaster

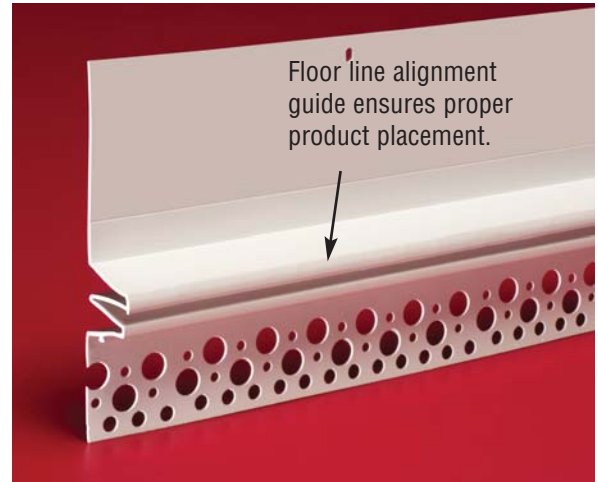


Section: 09200

## Floor Line Control Bead w/Drip Edge

Product Number	Ground	Dimensions/Descriptions	Pieces Per Box
2078-50	7/8" (22 mm x 1/2" (13 mm)		15
2078-58	7/8" (22 mm x 5/8" (16 mm)	Control bead w/ drip edge, 3-1/2" (89 mm) unpunched nailing flange.	15
2078-78	7/8" (22 mm x 7/8" (22 mm)		15
2078-78UP	7/8" (22 mm x 7/8" (22 mm)	Completely unpunched Control bead with 3-1/2" (89 mm) drip edge.	15

10' (3 m) Lengths



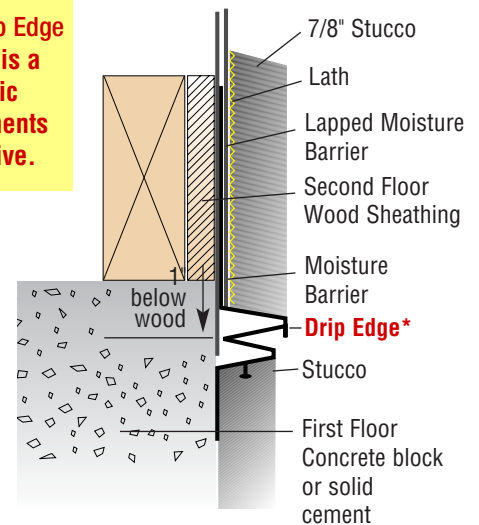
### Application:

For use as a horizontal control joint and a moisture control device where two dissimilar materials, such as wood and concrete, meet. (e.g. First floor concrete block construction and wood frame second floor). It allows moisture to migrate away from the wall. The unique drip edge prevents migrating moisture from entering the v-groove of the control joint.

### Specification:

Floor Line Control Bead w/Drip Edge will be Plastic Components, Inc. #\_\_\_\_\_. All exterior accessories shall conform to ASTM standards D1784, C1063 and D4216. All products shall be third party tested to meet ASTM standard D4216 and be Canadian Code Compliant. They shall be used where specified by the architect and installed per industry standards.

**\*This Drip Edge design is a Plastic Components exclusive.**



All butt joints, intersections and ends shall be caulked at the time of installation using an elastomeric sealant, such as Plastic Components' Ultra-Tech™ (PC-ULTW).

800.327.7077 ■ Fax 305.887.2452  
www.plasticcomponents.com