

# Stucco and Plaster

Section: 09200

## “Z” Flashing for Floor Line Applications

Product Number	Dimensions/Descriptions	Pieces Per Box
<b>SBZ-50</b>	“Z” Flashing 1/2" (13 mm) drip edge for 1/2" (13 mm) board	30
<b>SBZ-58</b>	“Z” Flashing 1/2" (13 mm) drip edge for 5/8" (16 mm) board	30
<b>SBZ-75</b>	“Z” Flashing 1/2" (13 mm) drip edge for 3/4" (19 mm) board	30
<b>SBZ-78</b>	“Z” Flashing 1/2" (13 mm) drip edge for 7/8" (22 mm) board	30

10' (3 m) Lengths

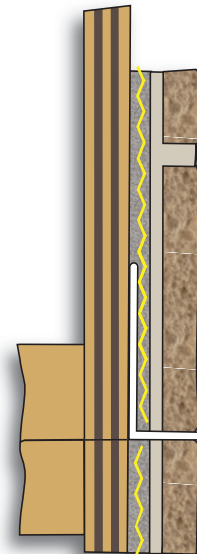


### Application:

Designed to use as a drip edge at the floor line to allow moisture to migrate down and shed away from wall and foundation.

### Specification:

“Z” Flashing for Floor Line Applications will be Plastic Components, Inc. #\_\_\_\_\_. All exterior accessories shall conform to ASTM standards D1784, C1063 and D4216. All products shall be third party tested to meet ASTM standard D4216 and be Canadian Code Compliant. They shall be used where specified by the architect and installed per industry standards.



*All butt joints, intersections and ends shall be caulked at the time of installation using an elastomeric sealant, such as Plastic Components' Ultra-Tech™ (PC-ULTW).*