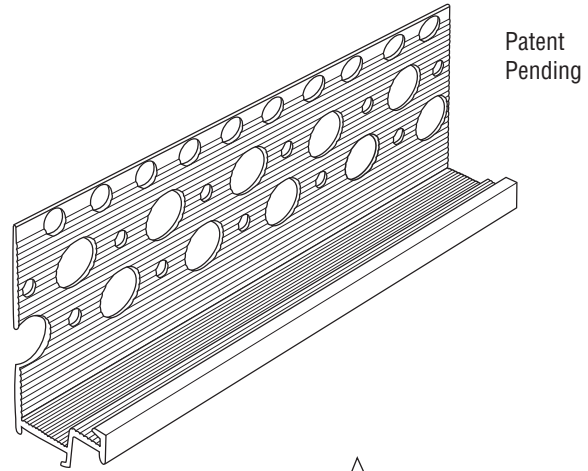




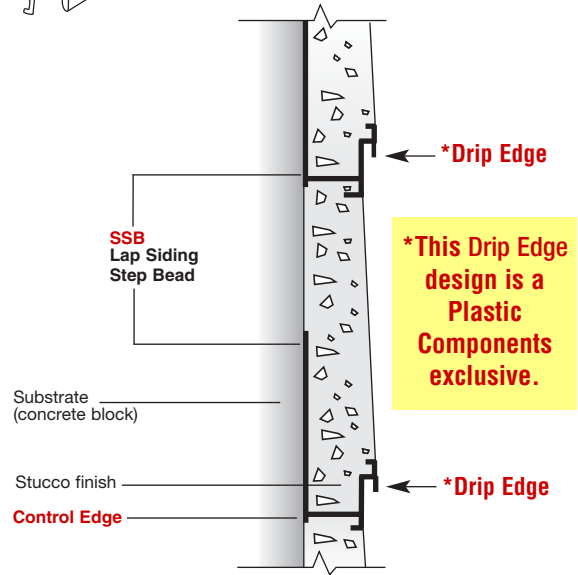
Section: 09200

## Lap Siding Step Bead

Product Number	Ground	Description	Pieces Per Box
SSB 75-50	3/4" (19 mm) x 1/2" (13 mm)	Lap siding step bead with striated 2" (51 mm) wide flange.	50
SSB 75-58	3/4" (19 mm) x 5/8" (16 mm)		50
SSB 78-58	7/8" (22 mm) x 5/8" (16 mm)		50
SSB 100-50	1" (25 mm) x 1/2" (13 mm)		50
SSB 100-58	1" (25 mm) x 5/8" (16 mm)		50
SSB 125-58	1-1/4" (31 mm) x 5/8" (16 mm)		50



Patent Pending

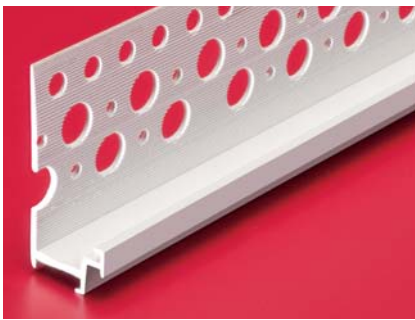


### Application:

Plastic Components' Siding Step Bead is designed to simulate the look of rigid cementitious siding with stucco alone. Features include a double ground (which functions as a screed between adjoining bands) and striated flanges that improve the bond with stucco.

### Specification:

Siding Step Bead shall be Plastic Components, Inc. #\_\_\_\_\_. All exterior accessories shall conform to ASTM standards D1784, C1063 and D4216. All products shall be third party tested to meet ASTM standard D4216 and be Canadian Code Compliant. They shall be used where specified by the architect and installed per industry standards.



*All butt joints, intersections and ends shall be caulked at the time of installation using an elastomeric sealant, such as Plastic Components' Ultra-Tech™ (PC-ULTW).*