

# Exterior Insulated Finishes

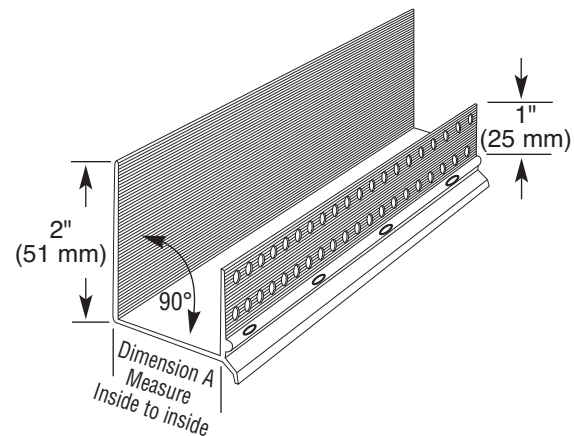
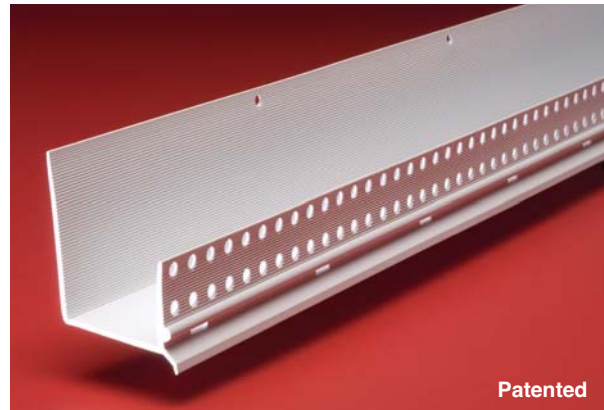
Section: 07240

## i DRIP TRAC®

Product Number	* Dimension A	Pieces Per Box
iDT-50	1/2" (13 mm)	35
iDT-58	5/8" (16 mm)	35
iDT-75	3/4" (19 mm)	30
iDT-1	1" (25 mm)	25
iDT-125	1-1/4" (31 mm)	20
iDT-15	1-1/2" (34 mm)	20
iDT-175	1-3/4" (38 mm)	15
iDT-2	2" (51 mm)	15
iDT-225	2-1/4" (57 mm)	15
iDT-25	2-1/2" (64 mm)	15
iDT-275	2-3/4" (70 mm)	10
iDT-3	3" (76 mm)	10
iDT-35	3-1/2" (89 mm)	10
iDT-4	4" (102 mm)	10

10' (3 m) Lengths

\*Dimension "A"– measure inside to inside



### Application:

Used with Eifs EPS foam board, iDRIP TRAC, is a one-piece positive flow combination Starter TRAC® with a built-in flashing drip edge. Weep holes are located at the front of the TRAC to carry moisture away from the building. Uses include above windows and doors; or as a starter TRAC.

The return face flange is 1" (25 mm) wide, with striations which provide a strong physical bond for the base coat to the return flange. A double row of holes allows for positive bond of the base to the substrate. Weep holes are set at 4" (102 mm) on center.

### Specification:

Window/Door iDRIP TRAC will be Plastic Components, Inc. #\_\_\_\_\_. All exterior accessories shall conform to ASTM standards D1784, C1063 and D4216. All products shall be third party tested to meet ASTM standard D4216 and be Canadian Code Compliant. They shall be used where specified by the architect and installed per industry standards.