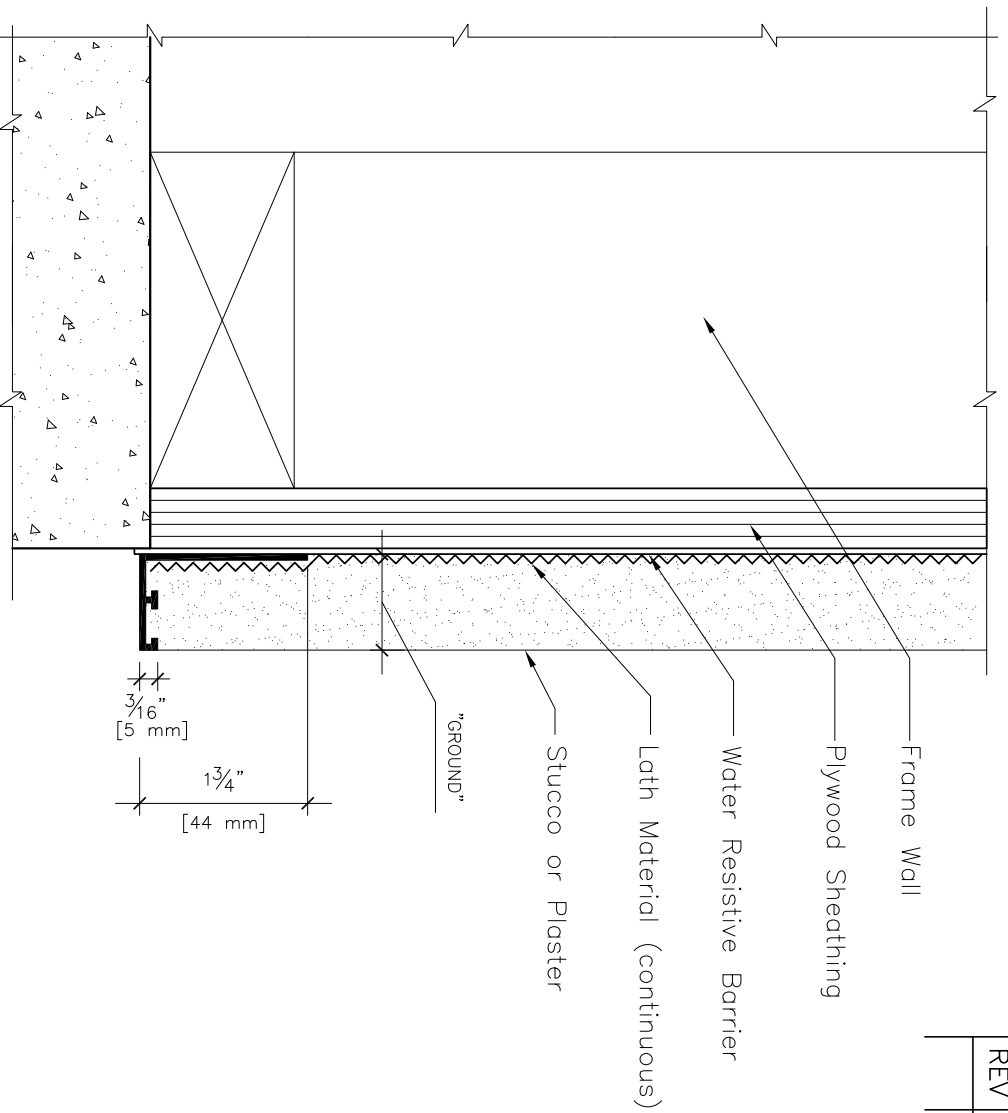


REVISION HISTORY			
REV	DESCRIPTION	DATE	APPROVED



Product Submittal	Product Number	Dimension "GROUND"
	1100	1" [25 mm]
	1125	1 1/4" [32 mm]
	1150	1 1/2" [38 mm]
	1200	2" [51 mm]

"T" Bar Casing Bead for Stucco and Plaster

SCALE: 6" = 1'-0"

NOTES:

1. Typical installation shown.
2. Actual installation shall meet all local building codes and ASTM standards.
3. All butt joints, intersections, ends and corners shall be caulked at the time of installation using an elastomeric sealant, such as Plastic Components "Ultra Tech" (PC-ULTW).

	NAME	DATE	PLASTIC COMPONENTS, Inc.
DRAWN	JKW	12/14/2011	9051 NW 97th Terrace ~ Miami, FL 33178 800-327-7077 ~ www.plasticcomponents.com
CHECKED			TITLE
ENG APPR			"T" Bar Casing Bead
MGR APPR			
UNLESS OTHERWISE SPECIFIED DIMENSIONS ARE IN INCHES ANGLES ±X.X°			SIZE DWG NO
2 PL ±X.XX 3 PL ±X.XXX			A "T" Bar Casing Bead
			FILENAME:T-Bar CasingBead - Framing.dwg
SCALE:			WEIGHT:
			SHEET 1 OF 1
			REV