

Stucco and Plaster

Section: 09200

Slip Joint/Expansion Joint

Product Number	Ground	Dimensions/Descriptions	Pieces per Box
501-50	1/2" (13 mm)	1" (25 mm) Reveal Slip joint/Expansion joint. Reveal adjusts from 3/4" to 1-1/8" (19 mm to 29 mm)	20
501-58	5/8" (16 mm)		20
501-75	3/4" (19 mm)		20

Product Number	Ground	Dimensions/Descriptions	Pieces per Box
500-50	1/2" (13 mm)	1-1/2" (38 mm) Reveal Slip joint/Expansion joint. Reveal adjusts from 1-1/4" to 1-5/8" (32 mm to 41 mm)	20
500-58	5/8" (16 mm)		20
500-75	3/4" (19 mm)		20

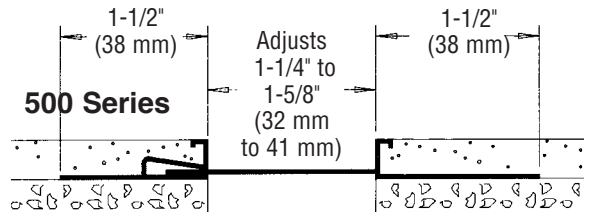
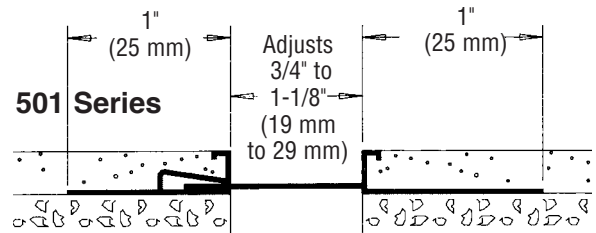
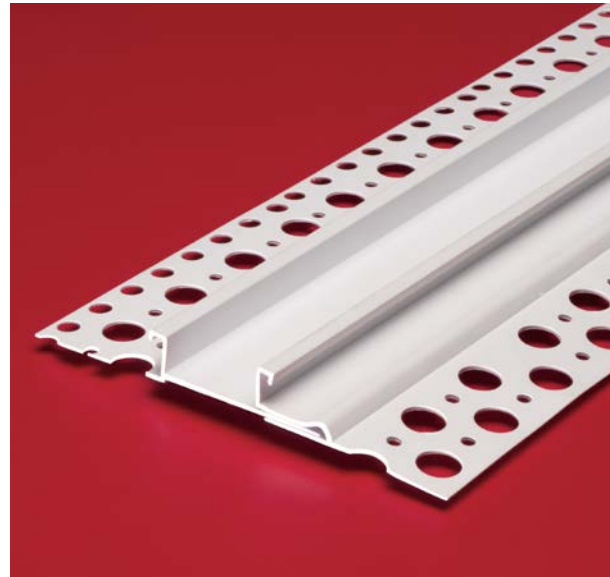
10' (3 m) Lengths • **Product ships unassembled.**

Application:

Used as an expansion joint while providing a reveal. Designed to expand and contract when severe movement is anticipated. When using in the vertical application, the lath should be split before installing the slip joint. When used in a horizontal plane, the same procedure should be used before placing the female side on top.

Specifications:

Slip Joint shall be Plastic Components, Inc. #_____. All exterior accessories shall be of PVC material conforming to ASTM standards D1784, C1063, C1861 and D4216. They shall be used where specified by the design authority and installed per industry standards.



All butt joints, intersections and ends shall be caulked at the time of installation using an elastomeric sealant, such as Plastic Components' Ultra-Tech™ (PC-ULTW).