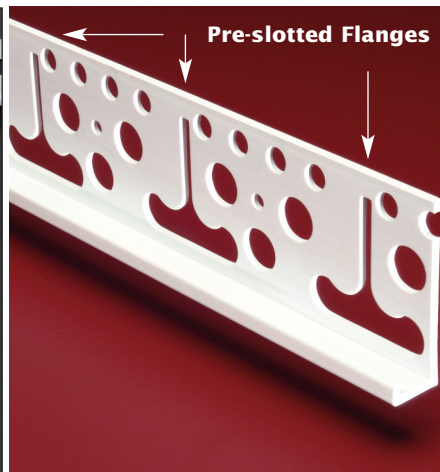
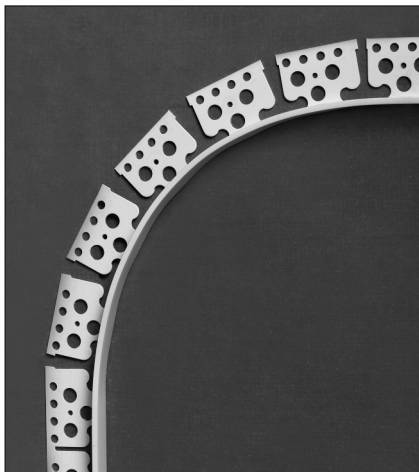


Plastic Components' **Casing Beads** create a termination point in many areas when applying exterior coating materials. They protect the coating with a straight, rustproof, high-impact resistant edge. Casing beads are versatile components that can be used on walls to create aesthetically shaped details and designs, such as bands and arches around windows and doors.

Available in sizes to create stucco ground thicknesses from 1/4 inch (6 mm) to 2 inches (51 mm).

## To install

- 1 Cut the casing bead to length to fit the designed detail.
- 2 Attach to the substrate with approved fasteners, construction adhesive or tie wire to the lath as specified by the architect, ASTM C1063, ASTM C926 and ASTM D1784, local building code, and industry standards.
- 3 Use a plumb line or level to check and maintain a straight line application during attachment. Shim as necessary to maintain a continuous straight edge.
- 4 Moisture barrier shall be specified and installed per the design professional.

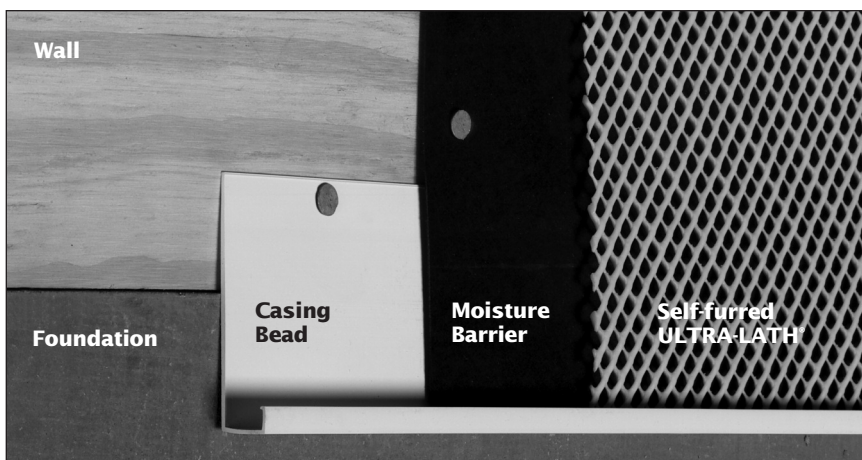


## Arched Casing Bead

Uncut, the arched casing bead can be used for straight and standard stucco casing bead applications.

## To install

- 1 Cut the pre-slotted flange to convert this stucco casing bead into an *arched* casing bead.
- 2 Attach to the substrate with approved fasteners, construction adhesive or tie wire to the lath as specified by the architect, ASTM C1063, ASTM C926 and ASTM D1784, local building code, and industry standards.



## 3.5" Foundation Casing Bead

Use at the stem wall/foundation line to control moisture penetration.

## To install

- 1 Attach to the substrate with the flange overlapping and extending below the stem wall/foundation line.
- 2 Install the moisture barrier and lath so that they overlap the top of the casing bead flange.

Caulk all butt joints, intersections and ends at time of installation using an elastomeric sealant such as Plastic Components' Ultra-Tech™ (PC-ULTW).

