

Stone Veneer

Section: 09200

Colored Foundation Weep Screeds

Product Number	Ground	Dimensions/ Descriptions	Pieces per Box
632-50	1/2" (13 mm)	White FHA Weep screed, 3-1/2" (89 mm) wide flange for framing applications.	35
632-58	5/8" (16 mm)		35
632-75	3/4" (19 mm)		35
632-78	7/8" (22 mm)		30
632-100	1" (25mm)		25
632-50TAN	1/2" (13 mm)	Tan colored FHA Weep screed, 3-1/2" (89 mm) wide flange for framing applications.	35
632-50TAN	5/8" (16 mm)		35
632-50TAN	3/4" (19 mm)		35
632-50TAN	7/8" (22 mm)		30
632-50TAN	1" (25mm)		25
632-50GRAY	1/2" (13 mm)	Gray colored FHA Weep screed, 3-1/2" (89 mm) wide flange for framing applications.	35
632-50GRAY	5/8" (16 mm)		35
632-50GRAY	3/4" (19 mm)		35
632-50GRAY	7/8" (22 mm)		30
632-50GRAY	1" (25mm)		25
632-50DB	1/2" (13 mm)	Dark Brown colored FHA Weep screed, 3-1/2" (89 mm) wide flange for framing applications.	35
632-50DB	5/8" (16 mm)		35
632-50DB	3/4" (19 mm)		35
632-50DB	7/8" (22 mm)		30
632-50DB	1" (25mm)		25

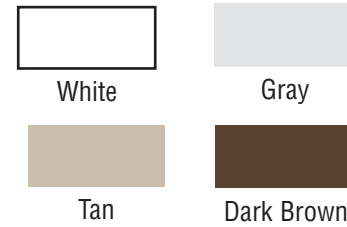
10' (3 m) Lengths

Application:

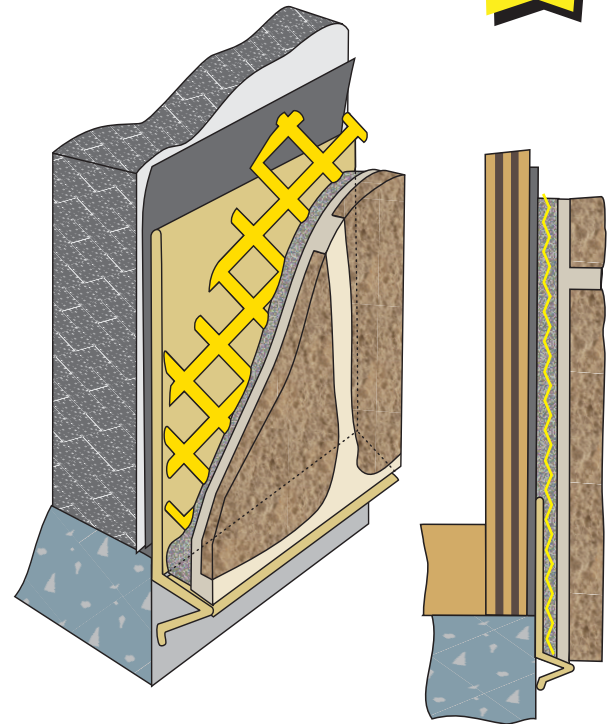
To be installed at plate line or stem wall, providing a stop for stone veneer. Design allows moisture to migrate down and shed away from wall.

Specifications:

Color Foundation Weep Screed shall be Plastic Components, Inc. # _____. All exterior accessories shall be of PVC material and meet ASTM D1784, C1063, D4216, C1861 and C1780. They shall be used where specified by the design authority and installed per industry standards.



In Four Colors!



All butt joints, intersections and ends shall be caulked at the time of installation using an elastomeric sealant, such as Plastic Components' Ultra-Tech™ (PC-ULTW).



PLASTIC PC[™]
COMPONENTS inc.

305.885.0561 ■ 800.327.7077
www.plasticcomponents.com