

# Stone Veneer

Section: 09200

## Colored Termination Bead (Weeped or Unweeped)

Product Number	Ground	Dimension/Descriptions	Pieces per Box
1050	1/2" (13 mm)	White termination bead, 1-3/4" (44 mm) perforated flange.	75
1058	5/8" (16 mm)		75
1075	3/4" (19 mm)		75
1078	7/8" (22 mm)		75
1100	1" (25mm)		50
1050TAN	1/2" (13 mm)	Tan colored termination bead, 1-3/4" (44 mm) perforated flange.	75
1058TAN	5/8" (16 mm)		75
1075TAN	3/4" (19 mm)		75
1078TAN	7/8" (22 mm)		75
1100TAN	1" (25mm)		50
1050GRAY	1/2" (13 mm)	Gray colored termination bead, 1-3/4" (44 mm) perforated flange.	75
1058GRAY	5/8" (16 mm)		75
1075GRAY	3/4" (19 mm)		75
1078GRAY	7/8" (22 mm)		75
1100GRAY	1" (25mm)		50
1050DB	1/2" (13 mm)	Dark Brown colored termination bead, 1-3/4" (44 mm) perforated flange.	75
1058DB	5/8" (16 mm)		75
1075DB	3/4" (19 mm)		75
1078DB	7/8" (22 mm)		75
1100DB	1" (25mm)		50

10' (3 m) Lengths

Add suffix "WP" to order with weep holes. Example: 1050TANWP

### Application:

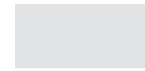
Color termination bead provides a finished edge between stone veneer and other materials such as vinyl or cementitious siding, stucco, etc.

### Specifications:

Color Termination Bead shall be Plastic Components, Inc. # \_\_\_\_\_. All exterior accessories shall be of PVC materials and meet ASTM standards D1784, C1063, D4216, C1861 and C1780. They shall be used where specified by the design authority and installed per industry standards.



White



Gray



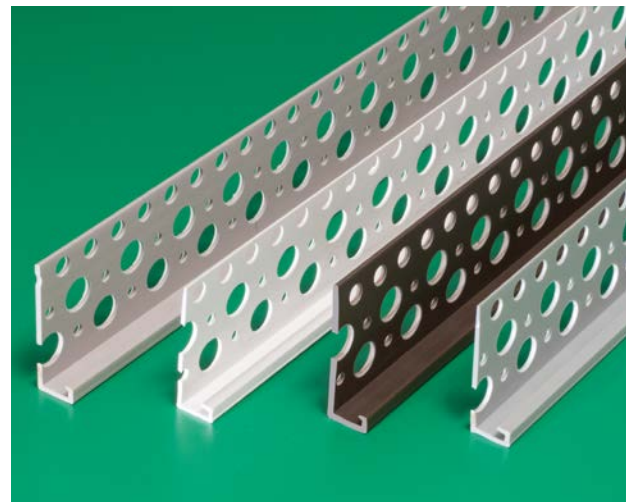
Tan



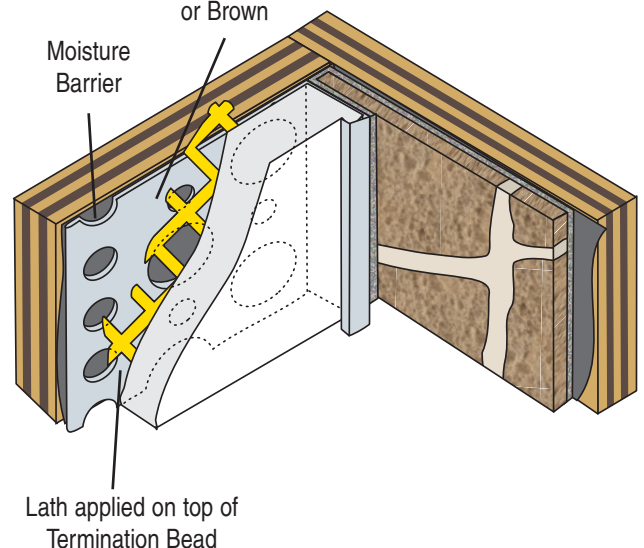
Dark Brown

In  
Four  
Colors!

**NEW!**



Available in  
White, Gray Tan  
or Brown



All butt joints, intersections and ends shall be caulked at the time of installation using an elastomeric sealant, such as Plastic Components' Ultra-Tech™ (PC-ULTW).