

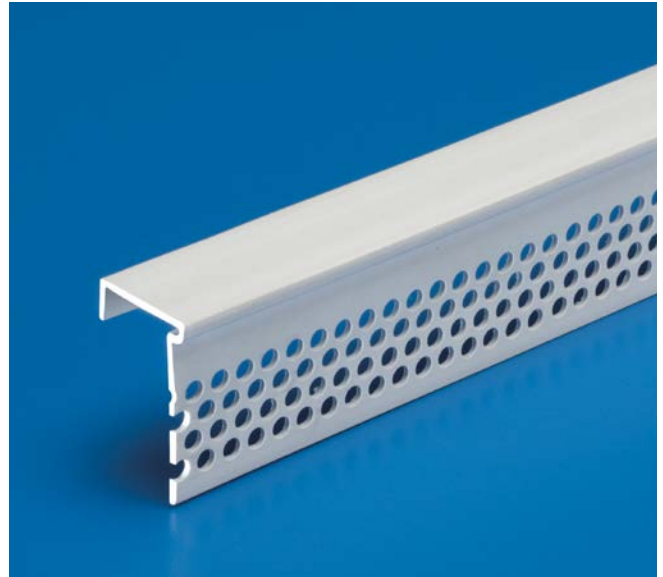
Drywall Accessories

Section: 09260

Fillable "J" Bead

Product Number	Dimensions/Descriptions	Board Thickness	Pieces per Box
201-50	Fillable "J" bead, 1-1/16" (27 mm) perforated flange.	1/2" (13 mm)	50
201-58		5/8" (16 mm)	50
201-78		7/8" (22 mm)	50

10' (3 m) Lengths



Application

Used to encase raw edges of drywall, preventing moisture from migrating into board. Wide perforated flange allows topping to key to board, eliminating need to tape the flange.

Specifications:

Fillable J Bead shall be Plastic Components Inc. #_____. All drywall accessories shall conform to ASTM standards D3678 and C1047. All products shall be third party tested to meet ASTM standard D4216 and be Canadian Code Compliant. Finish compatible with drywall mud and all paint finishes. They shall be used where specified by the design authority and installed per industry standards.

