

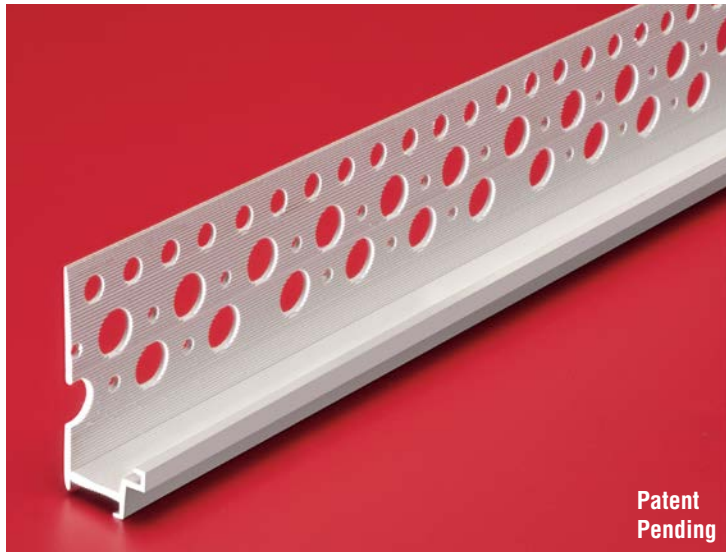
Stucco and Plaster

Section: 09200

Lap Siding Step Bead

Product Number	Ground	Dimensions Descriptions	Pieces per Box
SSB 75-50	3/4" (19 mm) x 1/2" (13 mm)	Lap siding step bead with striated 2" (51 mm) wide flange.	50
SSB 78-58	7/8" (22 mm x 5/8" (16 mm)		50
SSB 100-50	1" (25 mm) x 1/2" (13 mm)		50
SSB 100-58	1" (25 mm) x 5/8" (16 mm)		50

10' (3 m) Lengths



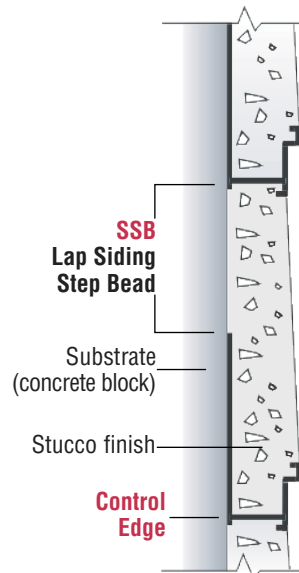
Patent Pending

Application:

Plastic Components' Lap Siding Step Bead is designed to simulate the look of rigid cementitious siding with stucco alone. Features include a double ground (which functions as a screed between adjoining bands) and striated flanges that improve the bond with stucco.

Specifications:

Lap Siding Step Bead shall be Plastic Components, Inc. #_____. All exterior accessories shall be of PVC material conforming to ASTM standards D1784, C1063, C1861 and D4216. They shall be used where specified by the design authority and installed per industry standards.



All butt joints, intersections and ends shall be caulked at the time of installation using an elastomeric sealant, such as Plastic Components' Ultra-Tech™ (PC-ULTW).



305.885.0561 ■ 800.327.7077
www.plasticcomponents.com