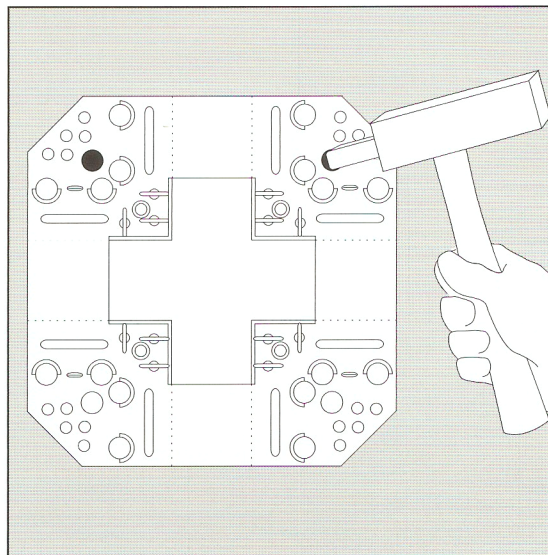
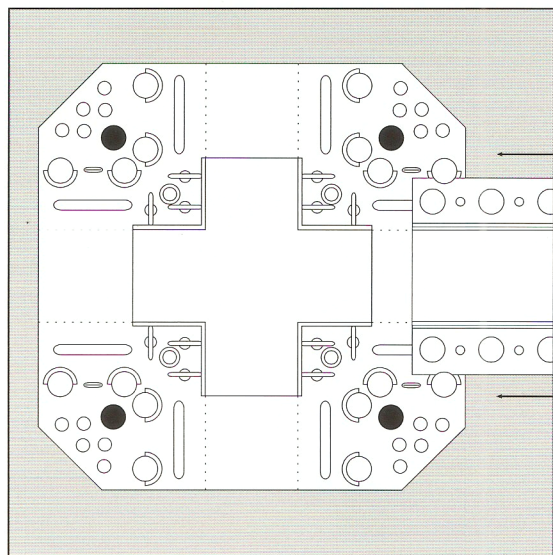


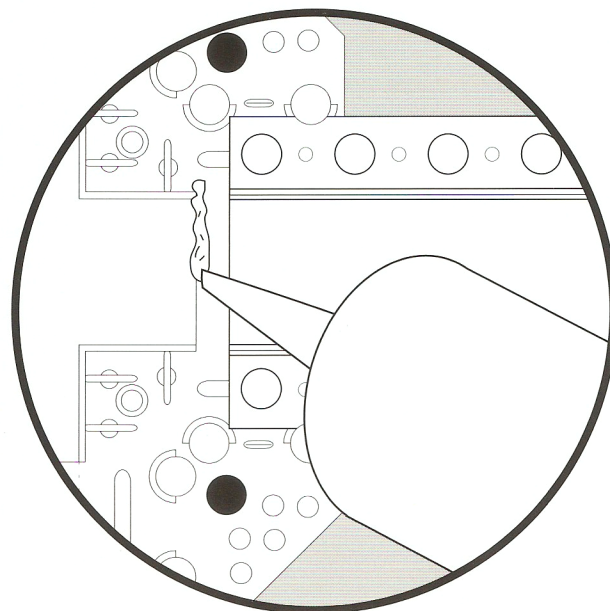
Ultra-Trac® Reveal Intersection Installation Guidelines



- 1)** Attach ULTRA-TRAC® intersection to substrate at pre-determined location.



- 2)** Insert ULTRA-TRAC® reveal into the intersection under the alignment guides. Prior to final placement of reveal...



- 3)** Apply a bead of caulk at the connecting point to ensure a positive water seal. Remove excess caulk with a clean rag.

Patent #5,579,623