

Stucco and Plaster



Section: 09200

Channel Casing Bead



Product Number	Ground	Width	Dimensions/Descriptions	Pieces Per Box
1150250-CCB	1-1/2" (38mm)	2-1/2" (64mm)	Channel casing bead designed for quicker, better quality installation. Faster, straighter, more consistent than butting two separate beads together.	15
1200100CCB	2" (51mm)	1" (26mm)		15
1200150CCB	2" (51mm)	1-1/2" (38mm)		15
1200200-CCB	2" (51mm)	2" (51mm)		15

10' (3 m) Lengths

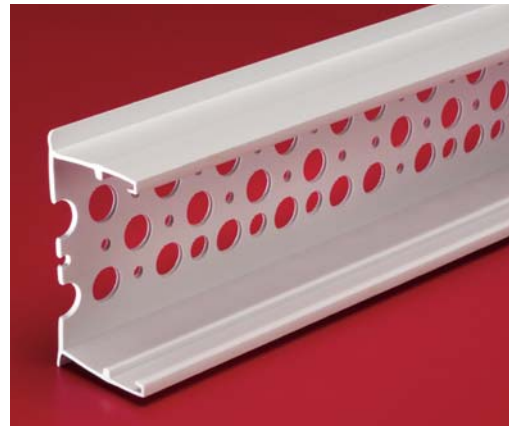


Application:

Channel casing bead is designed for quicker, better quality installations. Faster, straighter, more consistent than gluing two separate beads together.

Specification.

Channel Casing Bead shall be Plastic Components Inc. #_____. All exterior accessories shall conform to ASTM standards D1784, C1063 and D4216. All products shall be third party tested to meet ASTM standard D4216 and be Canadian Code Compliant. They shall be used where specified by the architect and installed per industry standards.



All butt joints, intersections and ends shall be caulked at the time of installation using an elastomeric sealant, such as Plastic Components' Ultra-Tech™ (PC-ULTW).



800.327.7077 ■ Fax 305.887.2452
www.plasticcomponents.com