

Stone Veneer

Section: 09200

Colored Foundation Weep Screeds

Product Number	Ground	Dimensions/Descriptions	Pieces Per Box
632-50	1/2" (13 mm)	White FHA Weep screed, 3-1/2" (89 mm) wide flange. Framing Applications.	35
632-58	5/8" (16 mm)		35
632-75	3/4" (19 mm)		35
632-78	7/8" (22 mm)		30
632-100	1" (25 mm)		25
632-50TAN	1/2" (13 mm)	Tan colored FHA Weep screed, 3-1/2" (89 mm) wide flange. Framing Applications.	35
632-58TAN	5/8" (16 mm)		35
632-75TAN	3/4" (19 mm)		35
632-78TAN	7/8" (22 mm)		30
632-100TAN	1" (25 mm)		25
632-50GRAY	1/2" (13 mm)	Gray colored FHA Weep screed, 3-1/2" (89 mm) wide flange. Framing Applications.	35
632-58GRAY	5/8" (16 mm)		35
632-75GRAY	3/4" (19 mm)		35
632-78GRAY	7/8" (22 mm)		30
632-100GRAY	1" (25 mm)		25

10' (3 m) Lengths

Application:

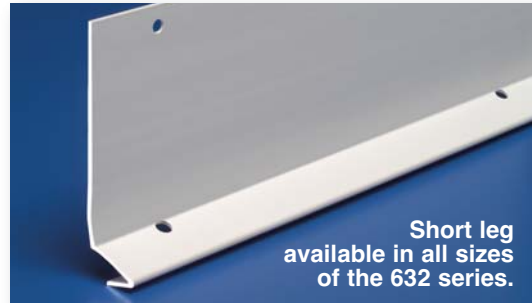
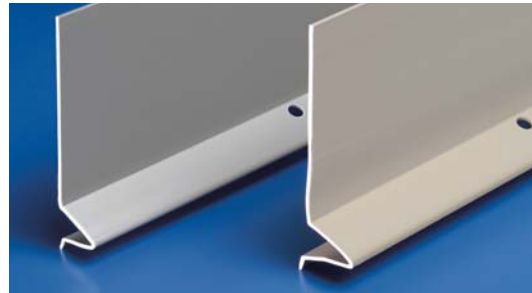
To be installed at plate line or stem wall, providing a stop for stone veneer. Design allows moisture to migrate down and shed away from wall.

Specification:

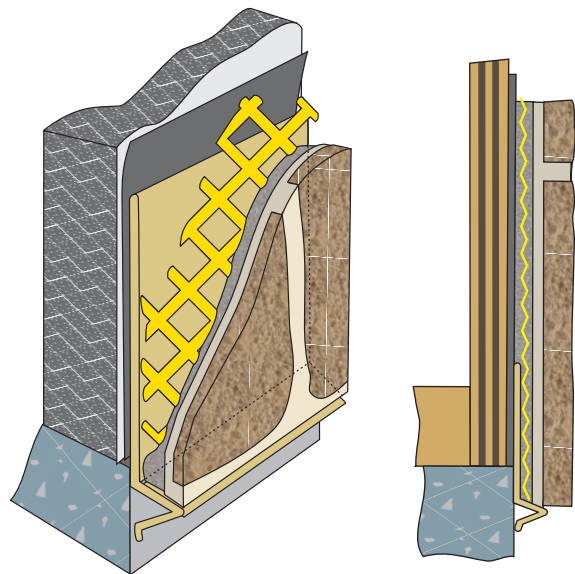
Colored Foundation Weep Screeds Screeds will be Plastic Components, Inc. #_____. All exterior accessories shall conform to ASTM standards D1784, C1063 and D4216. All products shall be third party tested to meet ASTM standard D4216 and be Canadian Code Compliant. They shall be used where specified by the architect and installed per industry standards.



Now in Three Colors!



To order product with short leg, add suffix SL. Example: 632-50SL



All butt joints, intersections and ends shall be caulked at the time of installation using an elastomeric sealant, such as Plastic Components' Ultra-Tech™ (PC-ULTW).