

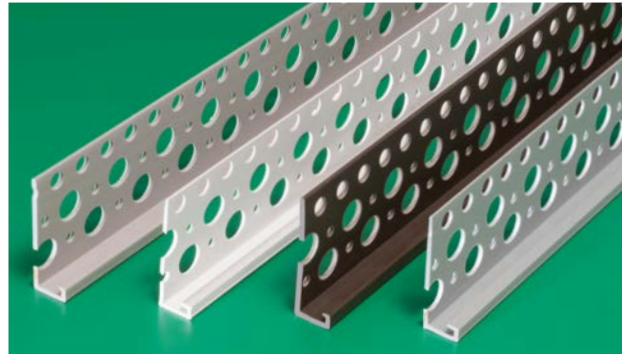
Stone Veneer

Section: 09200

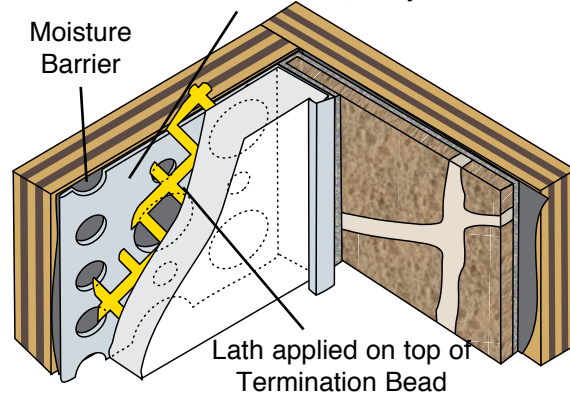
Colored Termination Bead (Weeped or Unweeped)

Product Number	Ground	Dimensions/ Descriptions	Pieces per box
1050	1/2" (13 mm)	White termination bead, 1-3/4" (44 mm) perforated flange.	35
1058	5/8" (16 mm)		75
1075	3/4" (19 mm)		75
1078	7/8" (22 mm)		75
1100	1" (25mm)		50
1050TAN	1/2" (13 mm)	Tan colored termination bead, 1-3/4" (44 mm) perforated flange	35
1058TAN	5/8" (16 mm)		75
1075TAN	3/4" (19 mm)		75
1078TAN	7/8" (22 mm)		75
1100TAN	1" (25mm)		50
1050GRAY	1/2" (13 mm)	Gray colored termination bead, 1-3/4" (44 mm) perforated flange.	35
1058GRAY	5/8" (16 mm)		75
1075GRAY	3/4" (19 mm)		75
1078GRAY	7/8" (22 mm)		75
1100GRAY	1" (25mm)		50
1050DB	1/2" (13 mm)	Dark Brown colored termination bead, 1-3/4" (44 mm) perforated flange.	35
1058DB	5/8" (16 mm)		75
1075DB	3/4" (19 mm)		75
078DB	7/8" (22 mm)		75
1100DB	1" (25mm)		50

10' (3 m) Lengths

Add suffix **WP** to order with weep holes. Example: 1050TANWP**In Four Colors!****NEW!**

Available in White, Gray Tan or Brown



Application:

Colored termination bead provides a finished edge between stone veneer and other materials such as vinyl or cementitious siding, stucco etc.

Specification:

Colored Termination bead will be Plastic Components, Inc. #_____. All exterior trim shall be of PVC material that meets ASTM D1784, C926, C1063, C1861, and D4216, shall be third party tested and meets Canadian code. They shall be used where specified by the design authority and installed per industry standards.

All butt joints, intersections and ends shall be caulked at the time of installation using an elastomeric sealant, such as Plastic Components' Ultra-Tech™ (PC-ULTW).



PLASTIC PC™
COMPONENTS inc.

800.327.7077 ■ Fax 305.887.2452
www.plasticcomponents.com