

Stone Veneer

Colored Foundation Weep Screeds

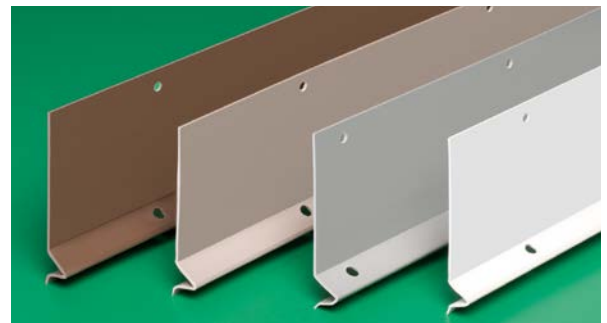
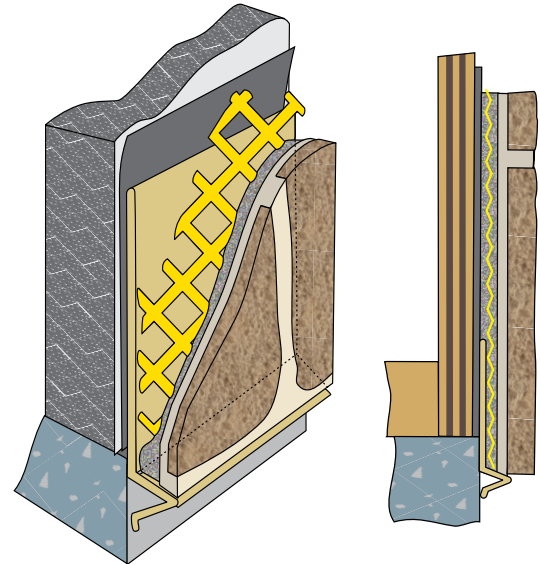
Product Number	Ground	Dimensions/ Descriptions	Pieces per box
632-50	1/2" (13 mm)	White FHA Weep screed, 3-1/2" (89 mm) wide flange for framing applications.	35
632-58	5/8" (16 mm)		35
632-75	3/4" (19 mm)		35
632-78	7/8" (22 mm)		30
632-100	1" (25 mm)		25
632-50TAN	1/2" (13 mm)	Tan colored FHA Weep screed, 3-1/2" (89 mm) wide flange for framing applications.	35
632-58TAN	5/8" (16 mm)		35
632-75TAN	3/4" (19 mm)		35
632-78TAN	7/8" (22 mm)		30
632-100TAN	1" (25 mm)		25
632-50GRAY	1/2" (13 mm)	Gray colored FHA Weep screed, 3-1/2" (89 mm) wide flange for framing applications.	35
632-58GRAY	5/8" (16 mm)		35
632-75GRAY	3/4" (19 mm)		35
632-78GRAY	7/8" (22 mm)		30
632-100GRAY	1" (25 mm)		25
632-50DB	1/2" (13 mm)	Dark Brown colored FHA Weep screed, 3-1/2" (89 mm) wide flange for framing applications.	35
632-58DB	5/8" (16 mm)		35
632-75DB	3/4" (19 mm)		35
632-78DB	7/8" (22 mm)		30
632-100DB	1" (25 mm)		25

10' (3 m) Lengths



In Four Colors!

Section: 09200



Application:

To be installed at plate line or stem wall, providing a stop for stone veneer. Design allows moisture to migrate down and shed away from wall.

Specification:

Colored Foundation Weep Screeds Screeds will be Plastic Components, Inc. #_____. All exterior trim shall be of PVC material that meets ASTM D1784, C926, C1063, C1861, and D4216, shall be third party tested and meets Canadian code They shall be used where specified by the design authority and installed per industry standards.

All butt joints, intersections and ends shall be caulked at the time of installation using an elastomeric sealant, such as Plastic Components' Ultra-Tech™ (PC-ULTW).



PLASTIC **PC**[™]
COMPONENTS inc.

800.327.7077 ■ Fax 305.887.2452
www.plasticcomponents.com