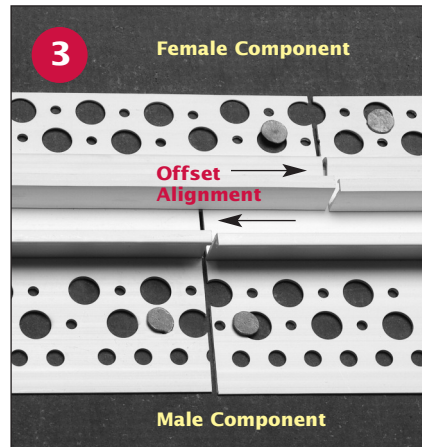
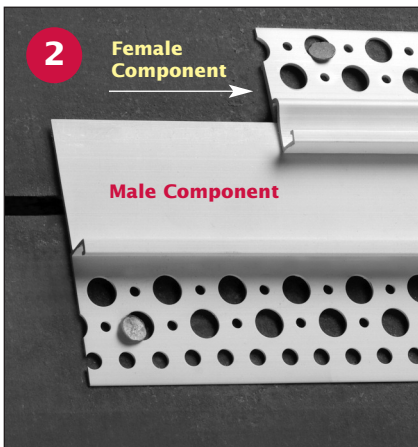
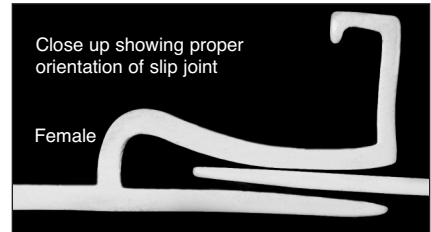


for Stucco and Plaster

Our 2-piece expansion/slip joints allow for two-dimensional movement and are designed to expand and contract where severe movement is anticipated. They are often used to join two different types of construction, and provide an aesthetic reveal to the detail.



Installation and attachment shall be in accordance with ASTM C1063, ASTM C926, ASTM D1784, the Portland Cement Plaster (stucco) Manual, local building codes, and industry standards.

To install

Assemble together the 2-piece component (corresponding male and female components) to allow for the engineered structural movement of the designed detail (Figure 1).

Horizontal applications:

Install the male component on the bottom of the assembly (Figure 2).

Continuous applications:

The ends of the components shall be assembled in an offset position to stagger the butt joint (Figure 3).

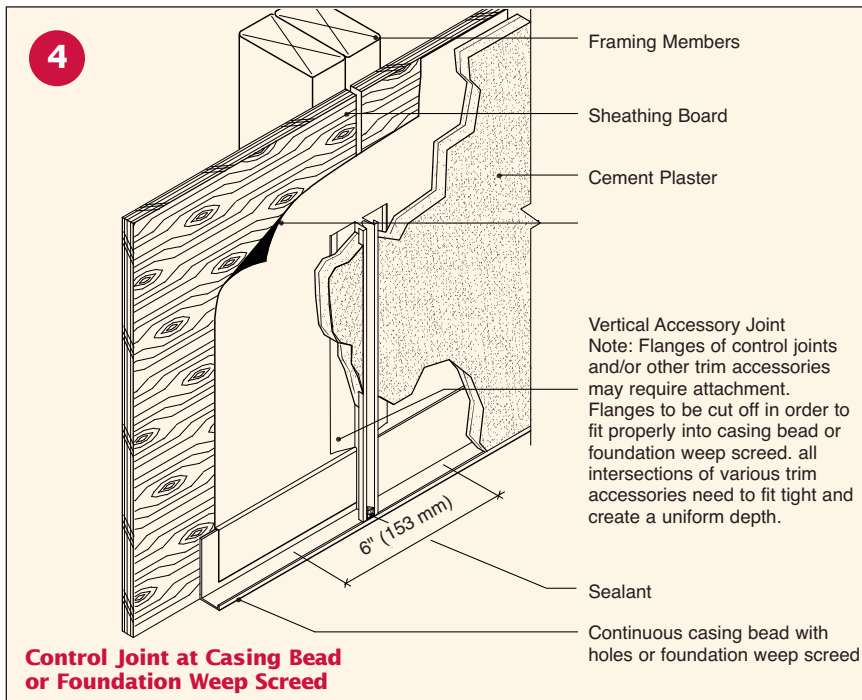
Embed all butt joints, intersections, and ends in a caulk-sealant at time of installation.

All **lath applications** (not shown) shall be cut and attached at each side of the component.

A lapped moisture barrier or flashing must be installed behind any two-piece joints (Figure 4).

Attach component to substrate with specified fastener, or tie wire to lath every 6 to 8 inches to isolate adjacent free-moving plaster panels.

Proper framing must be designed to accommodate control joint installation on ceiling assemblies.



Courtesy of Northwest Wall & Ceiling Bureau

Caulk all butt joints, intersections and ends at time of installation using an elastomeric sealant such as Plastic Components' Ultra-Tech[™] (PC-ULTW).

