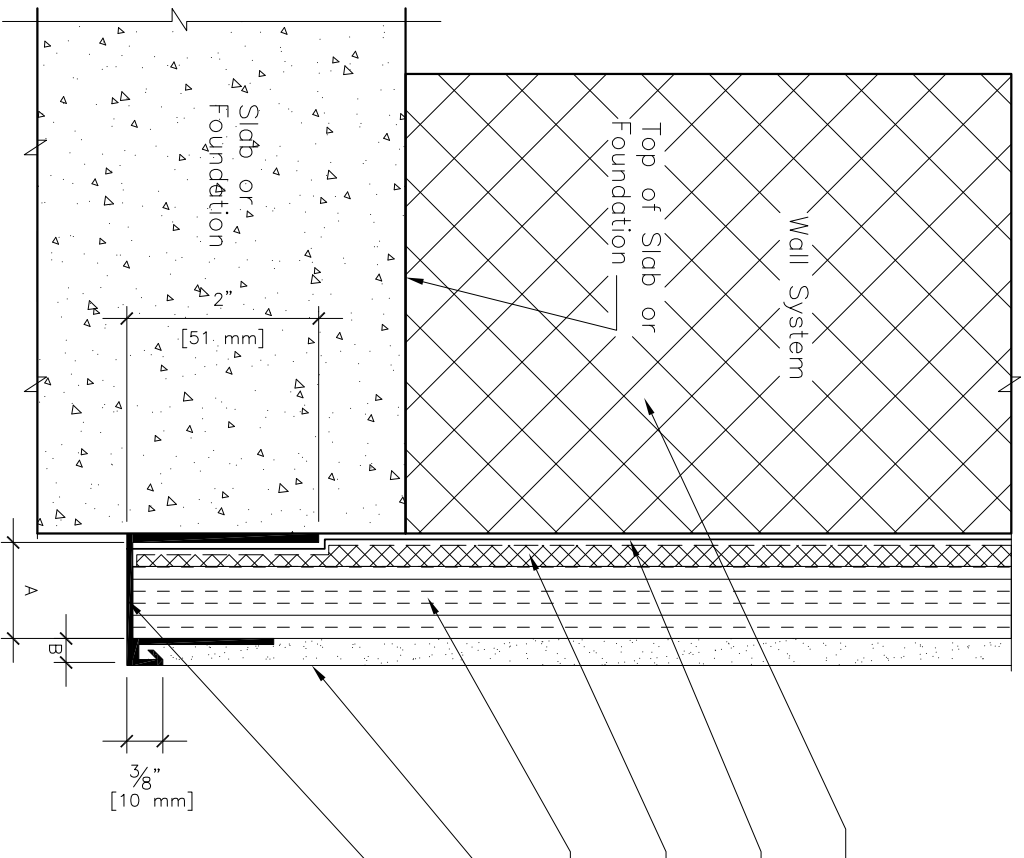


REVISION HISTORY			
REV	DESCRIPTION	DATE	APPROVED



- Concrete, Masonry or Frame Wall
- Water Resistive Barrier
- Drainage Mat (optional)
- Insulation
- Hard Coat EIFS or Stucco
- Weep Holes if Required

## Two-piece Casing Bead/STARTER TRAC for Hard Coat Exterior Insulated Finishes

SCALE: 6" = 1'-0"

**NOTES:**

1. Typical installation shown.
2. Actual installation shall meet all local building codes and ASTM standards.
3. All butt joints, intersections, ends and corners shall be caulked at the time of installation using an elastomeric sealant, such as Plastic Components "Ultra Tech" (PC-ULTW).

Product Submittal	Product Number	Dimension "A"	Dimension "B"
	SC-1-25	1" [25 mm]	1/4" [6 mm]
	SC-15-25	1 1/2" [38 mm]	1/4" [6 mm]
	SC-2-25	2" [51 mm]	1/4" [6 mm]
	SC-1-38	1" [25 mm]	3/8" [10 mm]
	SC-15-38	1 1/2" [38 mm]	3/8" [10 mm]
	SC-2-38	2" [51 mm]	3/8" [10 mm]

NAME	DATE	PLASTIC COMPONENTS, Inc.	
DRAWN JKW	12/13/2011	9051 NW 97th Terrace ~ Miami, FL 33178	
CHECKED		800-327-7077 ~ www.plasticcomponents.com	
ENG APPR		TITLE	
MGR APPR		Two-piece Casing Bead/STARTER TRAC for Hard Coat Exterior Insulated Finishes	
UNLESS OTHERWISE SPECIFIED DIMENSIONS ARE IN INCHES ANGLES ±X.X°		SIZE DWG NO	REV
2 PL ±X.XX 3 PL ±X.XXX		A SC-SERIES.dwg	
		FILENAME: SC-SERIES.dwg	
		SCALE:	WEIGHT: SHEET 1 OF 1