

# Direct Applied Finishes

Section: 07240

## Soffit Drip Screed for 1/16" Finish

Product Number	Dimension/Description	Board Thickness	Pieces per Box
<b>2254-50</b>	1/2" (13 mm) soffit drip screed	1/2" (13 mm)	25
<b>2254</b>	5/8" (16 mm) soffit drip screed	5/8" (16 mm)	25

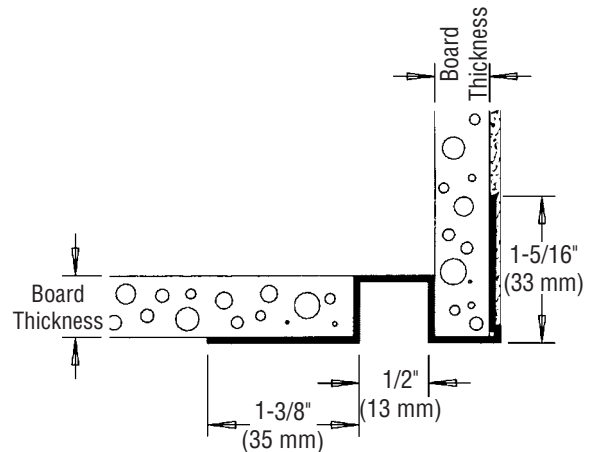
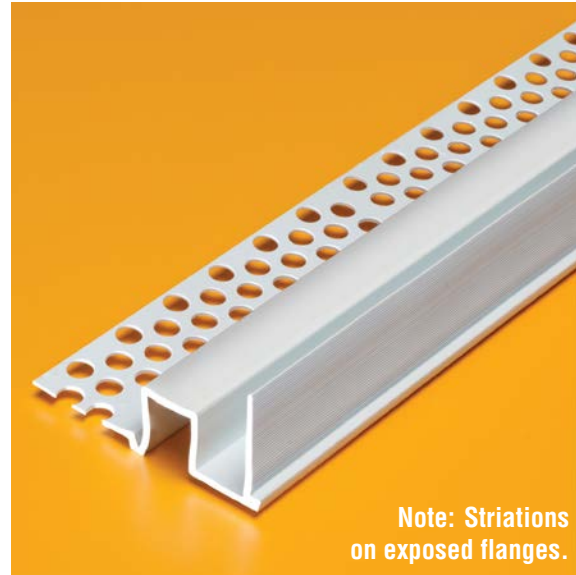
10' (3 m) Lengths

### Application:

Designed as a soffit drip screed. Provides a 1/2" (13 mm) reveal detail. Prevents water from running down the fascia and back into the soffit area. Surface areas have striations that provide positive bonding of base coat to profile detail. Has 1/8" (3 mm) stops to ensure proper thickness of base and finish.

### Specifications:

Soffit Drip Screed shall be Plastic Components Inc. # \_\_\_\_\_.  
 All exterior accessories shall conform to ASTM standards D1784, C1063 and D4216. They shall be used where specified by the design authority and installed per industry standards.



The base coat mesh should be lapped over the top of the perforated flanges and across all butt joints.



**305.885.0561 ■ 800.327.7077**  
[www.plasticcomponents.com](http://www.plasticcomponents.com)