

# Direct Applied Finishes

Section: 07240

## i DRIP TRAC™

Product Number	*Dimension A	Pieces per Box
iDT-50	1/2" (13 mm)	35
IDT-58	5/8" (16 mm)	35

10 (3 m) Lengths

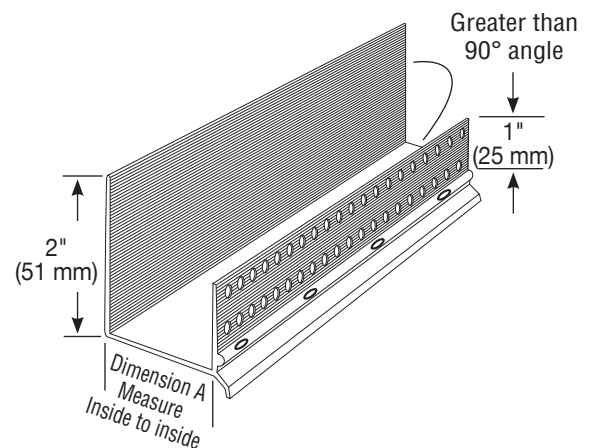
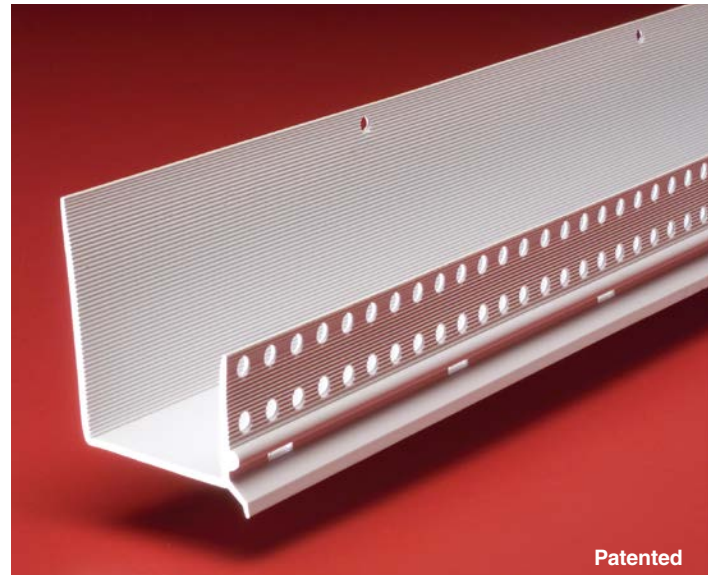
\*Dimension "A"— measure inside to inside

### Application:

i DRIP TRAC® is a one-piece positive flow combination STARTER TRAC® with built-in flashing drip edge. Weep holes, set at 4" (102 mm) on center, are located at the front of the TRAC to carry moisture away from the building. Uses: above windows, doors; as a Starter TRAC. Return face flange is 1" (25 mm) wide, with striations which provide a strong physical bond for the base coat to the return flange. A double row of holes allows for positive bond of the base to the substrate.

### Specifications:

Window/Door DRIP TRAC shall be Plastic Components Inc. #\_\_\_\_\_. All exterior accessories shall conform to ASTM standards D1784, C1063 and D4216. They shall be used where specified by the design authority and installed per industry standards.



The base coat mesh should be lapped over the top of the perforated flanges and across all butt joints.