

Direct Applied Finishes

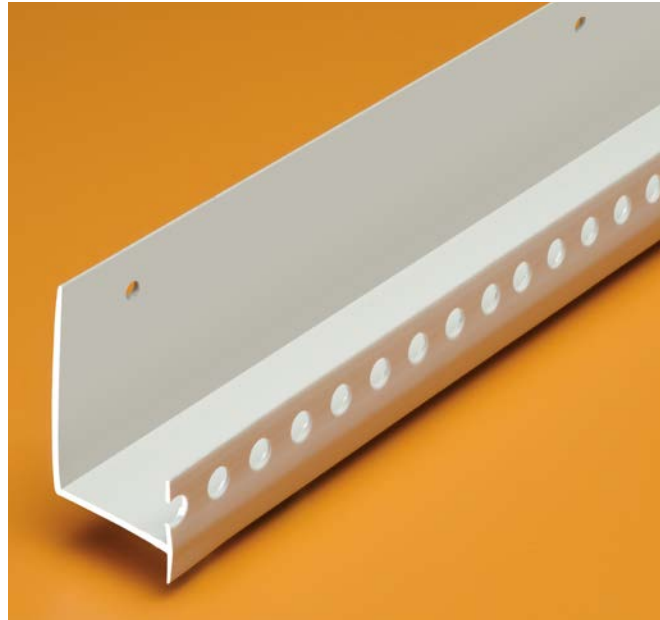
Section: 07240

CB STARTER TRAC® Drip Edge (Weeped or Unweeped)

Product Number	*Dimension A	Pieces Per Box
CB-50-16L	1/2" (13 mm)	60
CB-58-16L	5/8" (16 mm)	60

10' (3 m) Lengths

Add suffix "WP" to order with weep holes.
Example: CBWP-50-16L



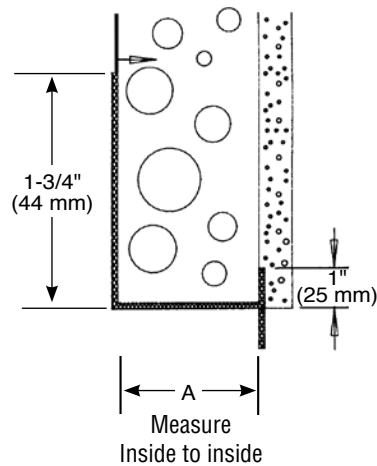
Application:

Provides a clean starting edge at the stem wall. Eliminates the need to back wrap; drip edge allows moisture to run down the face and not back into the system. Excellent caulk and paint adhesion, holes on return flange allow for base coat to bond to surface of substrate.

Specification:

STARTER TRAC® with Drip Edge will be Plastic Components, Inc. #_____. All exterior accessories shall meet ASTM standards D1784, C1063, C1861 and D4216, shall be third party tested and Canadian Code compliant. They shall be used where specified by the design authority and installed per industry standards.

*Measure Dimension "A" inside to inside.



The base coat mesh should be lapped over the top of the perforated flanges and across all butt joints.

800.327.7077 ■ Fax 305.887.2452
www.plasticcomponents.com