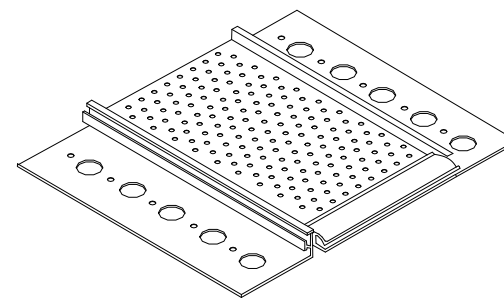
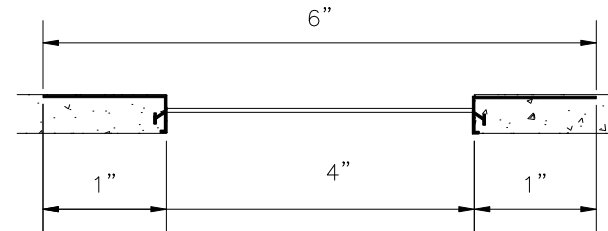
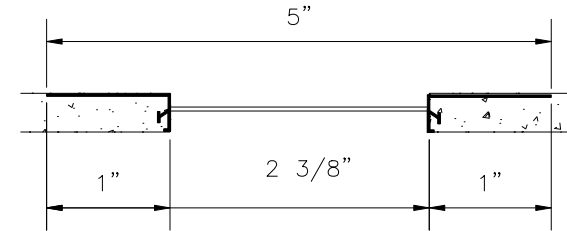
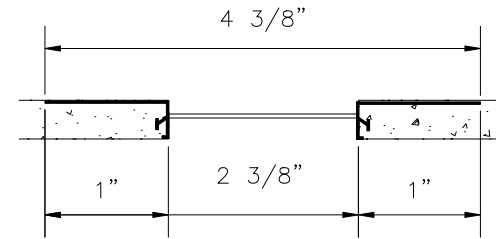


# CONTINUOUS SOFFIT VENT



PRODUCT NUMBER	GROUND DIMENSION	DESCRIPTION	PIECES PER BOX
549-50	1/2"	SOFFIT VENT 2 3/8" VENTED AREA. 15 SQ. IN. OF FREE AIR FLOW PER LINEAR FT.	13
549-58	5/8"		13
549-75	3/4"		13
549-78	7/8"		13
PRODUCT NUMBER	GROUND DIMENSION	DESCRIPTION	PIECES PER BOX
3549-50	1/2"	SOFFIT VENT 3" VENTED AREA. 15 SQ. IN. OF FREE AIR FLOW PER LINEAR FT.	13
3549-58	5/8"		13
3549-75	3/4"		13
3549-78	7/8"		13
PRODUCT NUMBER	GROUND DIMENSION	DESCRIPTION	PIECES PER BOX
4549-50	1/2"	SOFFIT VENT 4" VENTED AREA. 16 SQ. IN. OF FREE AIR FLOW PER LINEAR FT.	13
4549-75	3/4"		13
4549-78	7/8"		13
6549-50	1/2"	SOFFIT VENT 6" VENTED AREA. 18 SQ. IN. OF FREE AIR FLOW PER LINEAR FT.	13
6549-75	3/4"		13



APPLICATION:  
 LOW COST AND SIMPLE SOLUTION TO VENTING SOFFIT AREAS. WIDE NAILING FLANGE MAKES INSTALLATION EASIER. WILL NOT RUST. EXCELLENT PAINT ADHESION. "EYEBROW" ASSURES EXCELLENT KEYING OF STUCCO TO THE LEG. CONNECTOR CLIPS INCLUDED.

SPECIFICATION:  
 SOFFIT VENT SHALL BE PLASTIC COMPONENTS, INC. # \_\_\_\_\_.  
 ALL EXTERIOR ACCESSORIES SHALL BE OF PVC MATERIAL CONFORMING TO ASTM STANDARDS D1784-97 AND C1063-99 AND D4216-99. THEY SHALL BE USED WHERE SPECIFIED BY THE ARCHITECT AND INSTALLED PER INDUSTRY STANDARDS.