

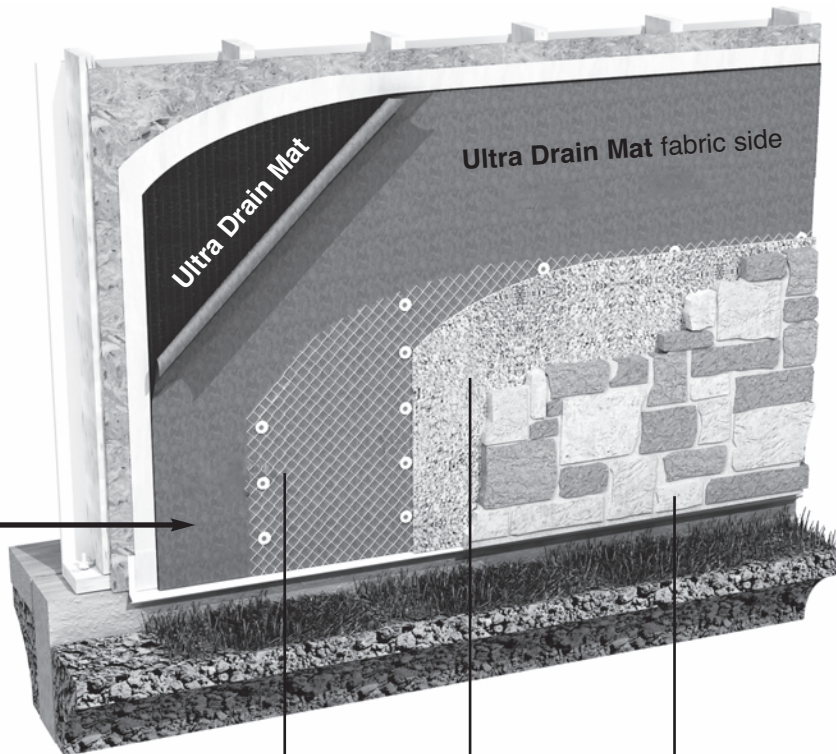
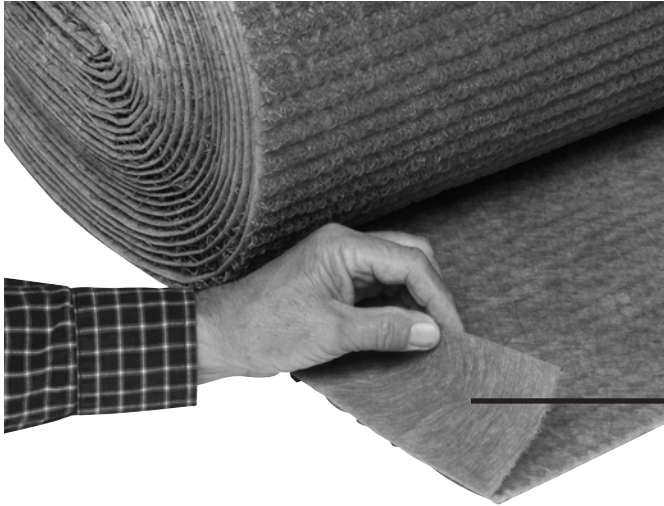
PLASTIC **PC**
COMPONENTS *inc.*



ULTRA DRAIN MAT™

DRAINAGE MAT FOR EXTERIOR WALLS

INSTALLATION INSTRUCTIONS STUCCO & MASONRY VENEER

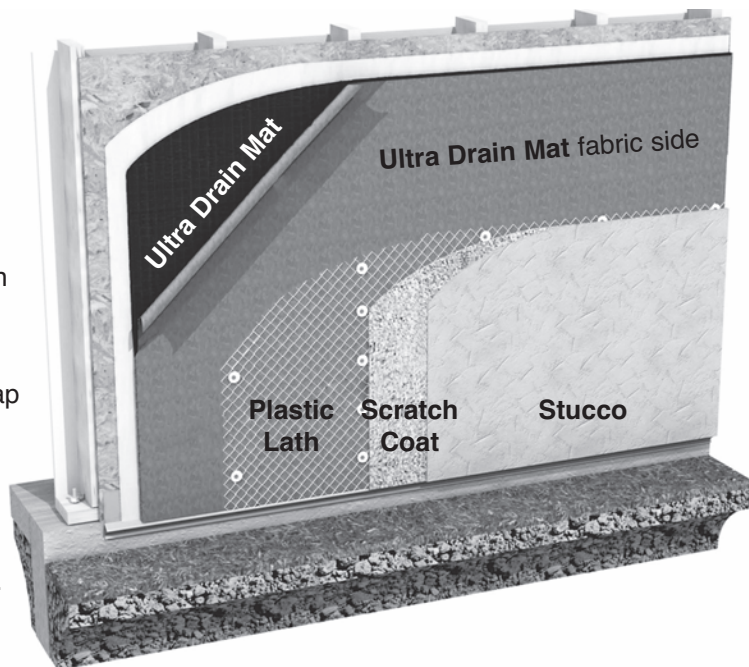


- Apply weather-resistant barrier over sidewall sheathing **Note:** some regions may require two layers of weather-resistant barrier. Check local codes for more information.
- Install Ultra Drain Mat after windows and doors have been properly installed and flashed. Starting at the base of the wall, unroll the Ultra Drain Mat from right to left with the 4" fabric flap at the bottom, the three-dimensional red polymer matrix against the weather-resistant barrier and the fabric facing the exterior of the building. Staple or nail every 3 square feet.
- On the first (bottom course) ONLY, unfold the 4" fabric flap and tuck it between the (red) polymer matrix and the weather-resistant barrier to create an insect screen.
- On subsequent courses, butt red polymer fabric together tightly without overlapping. Pull 4" fabric flap over previous course, shingle style, and staple.
- On top course, invert the roll and unroll left to right with the 4" fabric flap at top. Unfold the fabric flap and tuck it between the red matrix and the weather-resistant barrier to create an insect screen.
- Apply lath, scratch coat, and stucco or masonry veneer siding over Ultra Drain Mat using manufacturer's recommended fasteners and spacing.

Ultra-Lath Plus®
Plastic Lath

Scratch
Coat

Stone
Veneer



Plastic
Lath

Scratch
Coat

Stucco

INSTALLATION INSTRUCTIONS



DRAINAGE MAT FOR EXTERIOR WALLS

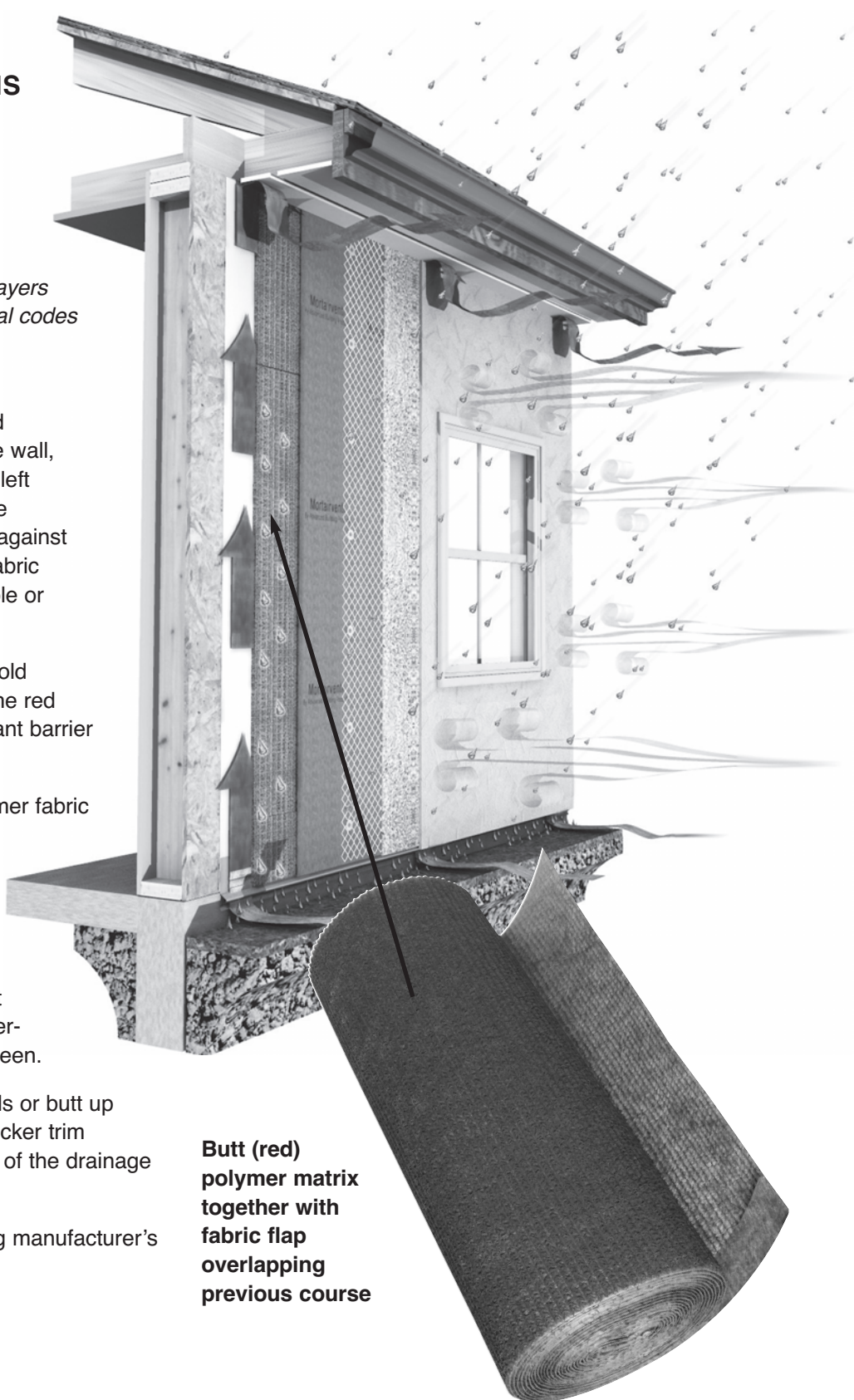
PLASTIC **PC**
COMPONENTS *inc.*

INSTALLATION INSTRUCTIONS WOOD, VINYL OR FIBER CEMENT SIDING

- Apply weather-resistant barrier over sidewall sheathing

Note: some regions may require two layers of weather-resistant barrier. Check local codes for more information.

- Install Ultra Drain Mat after windows and doors have been properly installed and flashed. Starting at the base of the wall, unroll the Ultra Drain Mat from right to left with the 4" fabric flap at the bottom, the three-dimensional red polymer matrix against the weather-resistant barrier and the fabric facing the *exterior* of the building. Staple or nail every 3 square feet.
- On the first (bottom course) ONLY, unfold the 4" fabric flap and tuck it between the red polymer matrix and the weather-resistant barrier to create an insect screen.
- On subsequent courses, butt red polymer fabric together tightly without overlapping. Pull 4" fabric flap over previous course, shingle-style, and staple.
- On top course, invert the roll and unroll left to right with the 4" fabric flap at top. Unfold the fabric flap and tuck it between the red matrix and the weather-resistant barrier to create an insect screen.
- Apply Ultra Drain Mat under trim boards or butt up against the trim board edge using a thicker trim board or shim to account for thickness of the drainage mat material.
- Apply siding over Ultra Drain Mat using manufacturer's recommended fasteners and spacing.



**Butt (red)
polymer matrix
together with
fabric flap
overlapping
previous course**