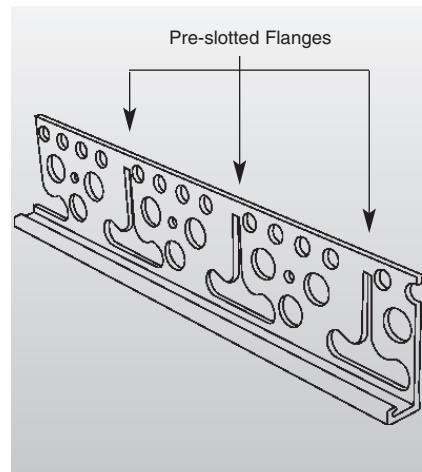
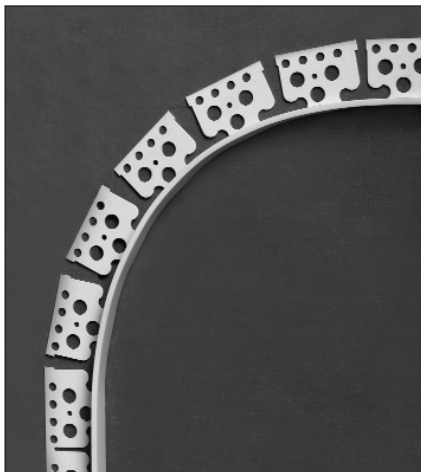


Plastic Components' **Casing Beads** terminate areas such as windows and doors when applying exterior coating materials. They protect the coating by providing a straight, rustproof, high-impact resistant edge. Casing beads are versatile components that can be used on walls to create aesthetically shaped details and designs, such as bands and arches around windows and doors.

Available in sizes to create stucco ground thicknesses from 1/4 inch (6 mm) to 2 inches (51 mm).

To install

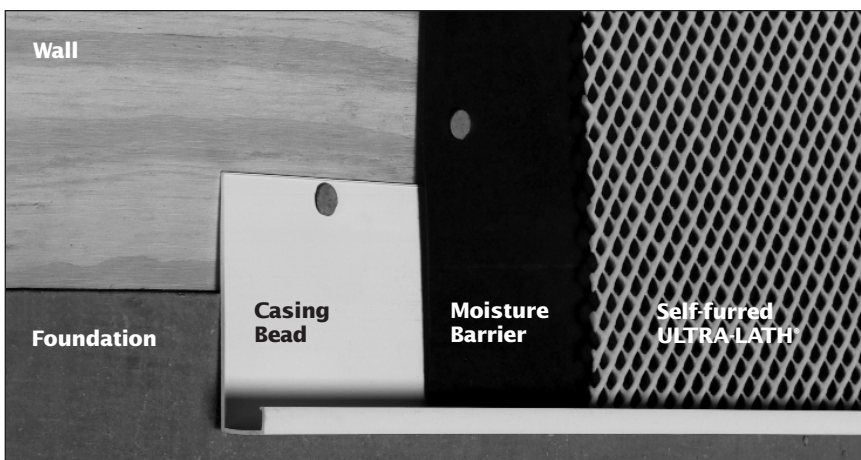
- 1 Cut the material to length to fit the designed detail.
- 2 Attach to the substrate with approved fasteners, construction adhesive or tie wire to the lath as specified by the architect, ASTM C1063 and ASTM C926, local building code, and industry standard.
- 3 Use a plumb line or level to check and maintain a straight line application during attachment. Shim as necessary to maintain a continuous straight edge.
- 4 Moisture barrier shall be specified and installed per the design professional, and in accordance with ASTM C1063.



Arched Casing Bead

To install

- 1 Cut the pre-slotted flange to convert this stucco casing bead into an *arched* casing bead.
- 2 Attach to substrate per ASTM C1063 and ASTM C926, and industry standards.



3.5" Foundation Casing Bead

Use below the stem wall or foundation line to control moisture penetration.

To install

- 1 Attach to the substrate with the flange overlapping and extending below the stem wall/foundation line.
- 2 Install the moisture barrier and lath so that they overlap the casing bead's flange.

Note Caulk all butt joints, ends, angles, corners, and intersections at time of installation.

Instrucciones en español al dorso

