

CI/EIFS/Hard Coat

Section: 07240

Mesh Corner Bead

Product Number	Description	Pieces per Box
2209MESH	7/8" flange Corner Bead with 4.5 ounce fire-resistant, alkaline-resistant fiberglass mesh attached to both legs; 3" on one leg, 5" on the other.	50

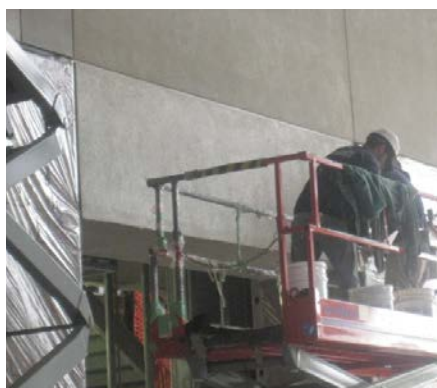
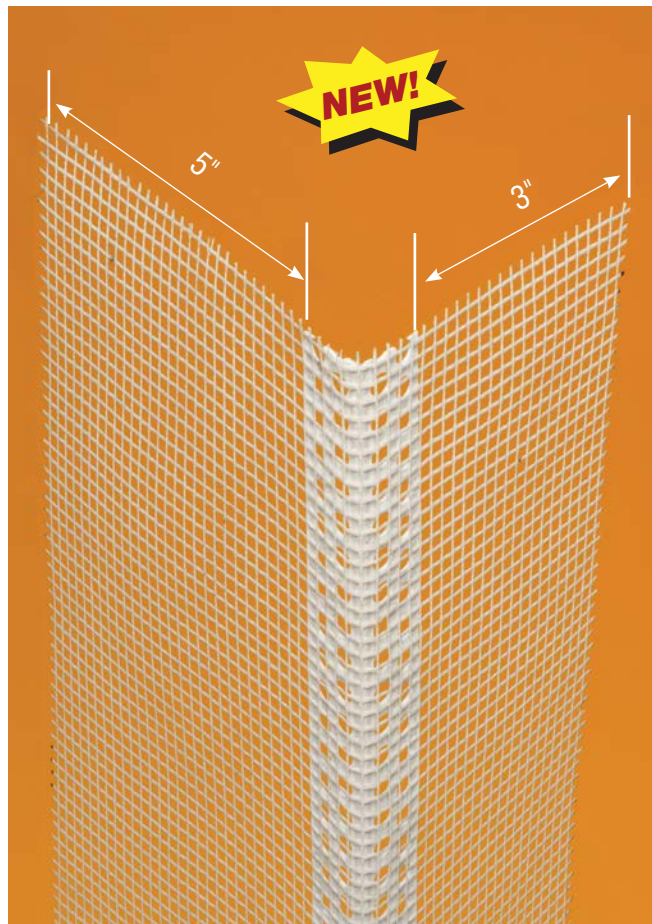
Available in 8' and 10' Lengths (2.5 m and 3 m)

Application:

2209MESH combines Plastic Components' reliable PVC corner bead and alkaline-resistant fiberglass mesh to bring you a time-saving alternative to wrapping corners by hand with multiple pieces of mesh.

Here's the solution to better-looking, strong and straight corner edges in direct applied and EIFS installations.

- Saves time; improves job quality
- Makes corners more durable; minimizes cracking
- Adds years to life of exterior corners
- Easy to apply, UV rated
- Makes application of finish coat easier
- Fire- and alkaline-resistant mesh
- Complies with ASTM D 579 and EIMA 105.01



PLASTIC PC™
COMPONENTS inc.

D-2

The base coat mesh should be lapped over the top of the perforated flanges and across all butt joints.

305.885.0561 ■ 800.327.7077
www.plasticcomponents.com