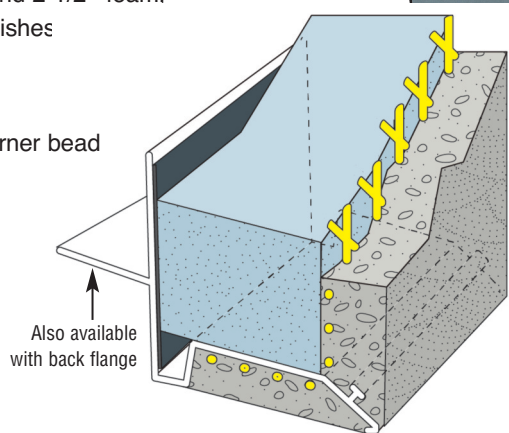


Save time and installation costs with Plastic Components' continuous insulation trim for foam systems. Its one piece design incorporates the corner bead into a single piece, improving job quality and delivering a better finish. Made of heavy duty, contractor-grade PVC our new continuous insulation trims, *with or without a back flange*, are perfect for 1-1/2", 2" and 2-1/2" foam. with 3/4" or 7/8" stucco finishes

BENEFITS

- Combines TRAC and corner bead into a single piece
- Lightweight, easy for installers to handle
- Saves time, improves job quality



for use with 3/4" (19 mm) Stucco Finish

Product Number	Foam Thickness	Description for Foam Systems	Stucco Ground	Pieces per Box
SBCI-15-75NF	1-1/2" (38 mm)	One-piece Hard Coat TRAC TM with corner bead No Flange	3/4"	8
SBCI-2-75NF	2" (51 mm)		3/4"	8
SBCI-25-75NF	2-1/2" (64 mm)		3/4"	8

10' (3 m) lengths • Delete suffix NF to order with back flange

for use with 7/8" (22 mm) Stucco Finish

Product Number	Foam Thickness	Description for Foam Systems	Stucco Ground	Pieces per Box
SBCI-15-78NF	1-1/2" (38 mm)	One-piece Hard Coat TRAC TM with corner bead No Flange	7/8"	8
SBCI-2-78NF	2" (51 mm)		7/8"	8
SBCI-25-78NF	2-1/2" (64 mm)		7/8"	8

10' (3 m) lengths • Delete suffix NF to order with back flange

Plastic Components' exterior trims are UV resistant, and manufactured of high-impact resistant, lead-free PVC compounds that meet ASTM standards D1784 and C1063 (for exterior stucco, one coat, DEFS and EIFS applications), D1784 (for exterior stucco), and D3678 and C1047 (for interior drywall).

