

# CI/EIFS/Hard Coat

Section: 07240

## CI Trims for Hard Coat

for use with 3/4" Stucco Finish

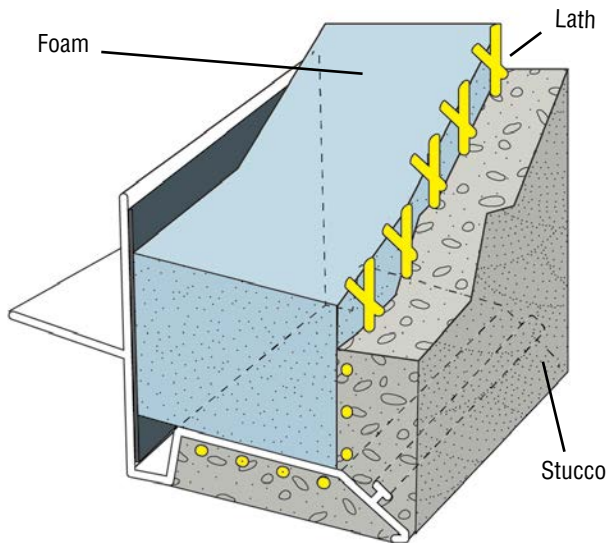
Product Number88	Foam Thickness	Description for Foam Systems	Stucco Ground	Pieces Per Box
<b>SBCI-15-75</b>	1-1/2" (38 mm)	One-piece Hard Coat TRAC™ with corner bead	3/4"	8
<b>SBCI-2-75</b>	2 (51 mm)		3/4"	
<b>SBCI-25-75</b>	2-1/2 (64 mm)		3/4"	

for use with 7/8" Stucco Finish

Product Number88	Foam Thickness	Description for Foam Systems	Stucco Ground	Pieces Per Box
<b>SBCI-15-78</b>	1-1/2" (38 mm)	One-piece Hard Coat TRAC™ with corner bead	7/8"	8
<b>SBCI-2-78</b>	2 (51 mm)		7/8"	
<b>SBCI-25-78</b>	2-1/2 (64 mm)		7/8"	

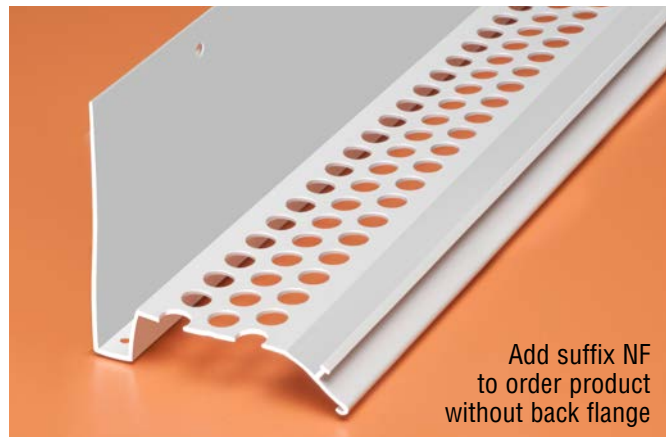
10' (3 m) Lengths

Add suffix NF to order product without back flange



### BENEFITS

- Combines TRAC and corner bead into a single piece
- Lightweight, easy for installers to handle
- Saves time, improves job quality



One-piece **CONTINUOUS INSULATION TRIMS** for hard coat combine a weeped foam TRAC™ with a corner bead for improving job quality in foam, with 3/4" or 7/8" stucco finishes



The base coat mesh should be lapped over the top of the perforated flanges and across all butt joints.

800.327.7077 ■ Fax 305.887.2452  
www.plasticcomponents.com