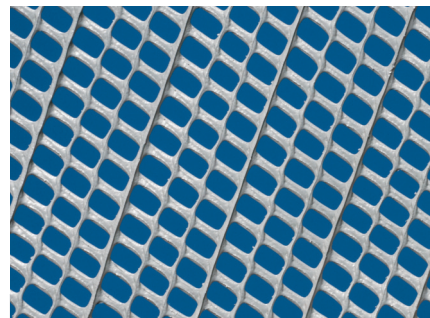


## Strip-Lath® Strips of 1/8" Self-furred Plastic Ultra-Lath®



### DESCRIPTION

1/8" self-furred non-metallic plastic lath  
 Versatile building material for many applications  
 Safe, easy to use  
 Does not corrode or rust Patent pending  
**3, 4, 6 and 8 inch wide Strip-Lath strips**



Cross Section



### USES

Stucco	1/2" thick one-coat vertical systems
Flooring	Underlayment under interior tile installations with a wood substrate, with or without radiant flooring
Drainage Strips	Helps control moisture in exterior cement-board wall systems

### LIMITATIONS

Not recommended for stucco applications on open framing.  
 STRIP-LATH® (Ultra-Lath®) should remain wrapped or stored under cover on jobsites.

### TECHNICAL SUPPORT

For information regarding a specific use or application, contact your local sales representative or Plastic Components at 800-327-7077.

### WARRANTY

PLASTIC COMPONENTS, INC. warrants that the product contained herein as manufactured by PLASTIC COMPONENTS, INC, when properly applied and used in and for the manner which it is manufactured in accordance with ASTM standard C1063 shall be free from defects and will perform as stated. The sole responsibility of PLASTIC COMPONENTS, INC. under this warranty, shall be for replacement of material only and excludes any labor or installation cost, and for material that is manufactured by PLASTIC COMPONENTS, INC. which has been deemed defective through manufacturing only, and not product which has been damaged during installation or improperly installed.

### FEATURES

### BENEFITS

<b>Non-metallic</b>	Non-rusting and non-corroding
<b>1/8" (3 mm) self-furred</b>	Improved keying of cementitious material to substrate
<b>Non-directional</b>	Horizontal or vertical installation
<b>High compressive strength</b>	No crimping at fastening points, eliminates blockages in drainage strips
<b>No sharp edges or ends</b>	Safer to handle and install
<b>Flexible</b>	Easy to shape, won't kink
<b>Lightweight</b>	Easy to cut, handle, install – lower installed costs
<b>Supplied in strips, various widths</b>	Reduced waste and convenience
<b>Non water absorptive</b>	Does not retain water
<b>Resists compression</b>	Does not crush, retains thickness
<b>Non conductive</b>	Does not affect WiFi, wireless transmissions

### COMPLIANCE, TEST DATA – ULTRA-LATH 1/8" Self-furred Plastic Lath Strips

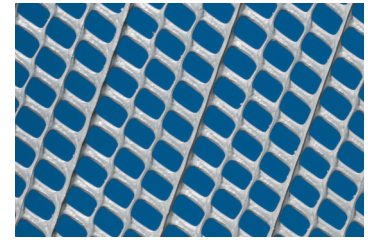
- Meets ASTM C926 and C1063.
- Third party tested by Intertek Testing Services for freeze/thaw, transverse load, alkali resistance and compressive and flexural strength.
- Third party tested by Fenestration Testing Laboratory for Miami-Dade County code approvals, test protocols PA201, PA202, PA203.



## Strip-Lath® Strips of 1/8" Self-furred Plastic Ultra-Lath®

### PACKAGING

Type	Catalog #	Description/Dimensions	Packaging
Strip-Lath® strips	PDM3	3" x 96" (76 mm x 2.4 m)	50 pieces per box
Strip-Lath® strips	PDM4	4" x 96" (102 mm x 2.4 m)	50 pieces per box
Strip-Lath® strips	PDM6	6" x 96" (152 mm x 2.4 m)	50 pieces per box
Strip-Lath® strips	PDM8	8" x 96" (203 mm x 2.4 m)	50 pieces per box



### TYPICAL APPLICATIONS

#### 1/2" ONE-COAT STUCCO

Use Plastic Components' ULTRA-LATH® non-metallic lath as continuous reinforcement for exterior or interior vertical one-coat stucco walls.

#### Limitations

Not recommended for use on open framing.

#### INSTALLATION GUIDELINES

##### Ridged side down

Install per ASTM C1063 with the 1/8" self-furring ridges with the ribbed surface against substrate.

##### Splices

Lap a minimum of 1" (25 mm) and fasten 6" (152 mm) on center.

##### Overlapping

Overlap lath by 1/2" (13 mm) *minimum* and wire, or cable tie at a minimum of 9" (229 mm) on center. On plywood sheathing, overlaps may be nailed or stapled instead of using ties.

##### Fasteners

Install all fasteners to framing members or the cementitious substrate a minimum of 6" (152 mm) on center. Set nails or screws flush with the surface of the lath but **do not countersink** (into the surface). Bend common nails over to engage a minimum of 3 strands of lath. **Do not countersink.**

For the latest fastening schedule refer to ASTM C1787, C1063 and C1861, Table 3.

#### NOTE:

Since one coat stucco systems are proprietary and do vary between manufacturers, please refer to the individual manufacturer's installation details.

#### FLOORING

ULTRA-LATH® and STRIP-LATH® may be used as an underlayment under interior tile installations with a wood substrate, with or without radiant flooring.

In radiant floors ULTRA-LATH / STRIP-LATH eliminates shorts and cut water lines.

#### INSTALLATION GUIDELINES

##### For Flooring Standards

Refer to Tile Council of North America publications F185-14 and RH140-14.



#### DRAINAGE STRIPS

Ideal for all vertical cladding with drainage, ULTRA-LATH creates a space between cladding and wall for increased air circulation and drainage. It controls moisture, reducing mold, mildew and dampness in the wall. Available in sheets or rolls for full coverage, its high compressive strength prevents crimping at fastening points and eliminates blockages.

Use convenient **STRIP-LATH plastic strips** as furring strips.

