



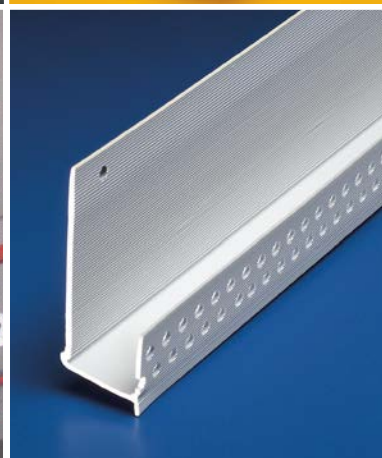
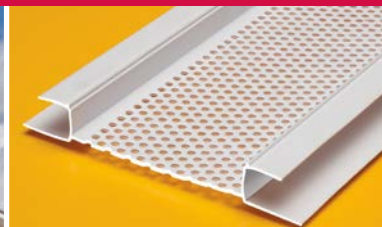
Made in the USA

Since 1969

PLASTIC *PC*™
COMPONENTS inc.

Linked
follow us

PVC ACCESSORIES



for Direct Applied Finishes

Plastic Components

Florida-based **Plastic Components** is the originator and designer of many innovative trims, and since 1969, has manufactured quality plastic trims and accessories for the construction industry that solve problems created by standard metal.



Our nearly 700 line items include corner beads, control joints, vents, slip joints, reveals, and more for continuous insulation and exterior insulated finish systems (CI/EIFS), **direct applied** (DEFS), stucco, stone veneer and drywall.

From freezing cold to extreme heat, Plastic Components' PVC products deliver optimal results – good looks, easy handling, moisture management, reduced labor costs and superior field performance.

Our trims are tested and listed with Intertek Testing Services/Warnock Hersey to meet or exceed the strict standards set by ASTM.

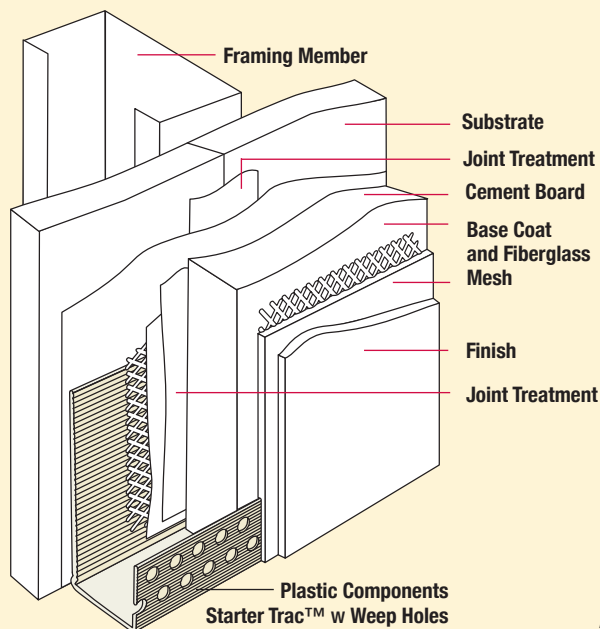
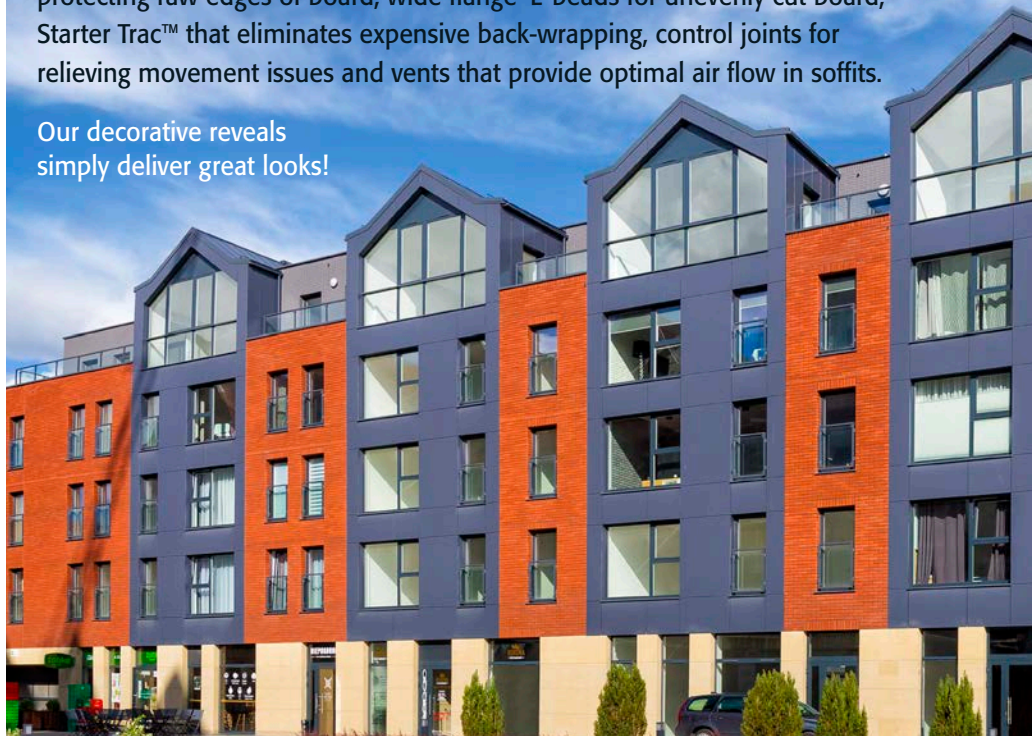


PVC Trims for Direct Applied Finishes
Save time. Protect and ensure straight corners with field-engineered accessories that add integrity to the system. They're UV resistant and paintable too!

PLASTIC *PC*™
COMPONENTS inc.

Our paintable, UV resistant **Direct Applied Trims** include casing beads for protecting raw edges of board, wide flange 'L' beads for unevenly cut board, Starter Trac™ that eliminates expensive back-wrapping, control joints for relieving movement issues and vents that provide optimal air flow in soffits.

Our decorative reveals simply deliver great looks!



Sample Detail **Direct Applied System**



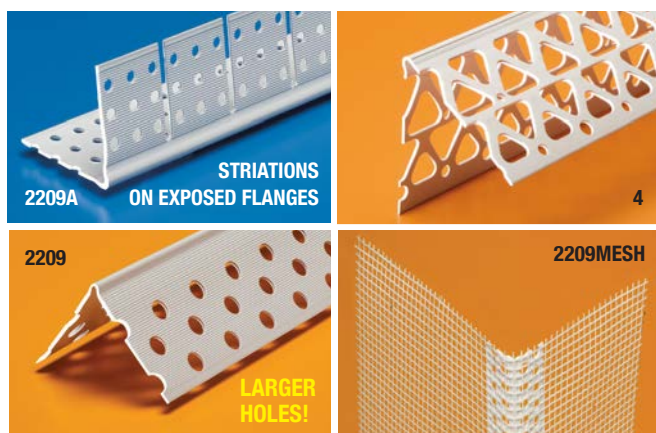
MEETS ASTM
D4216, D1784

Contact us at **800-327-7077** or **plasticcomponents.com** for assistance.

Manufacturers of PVC Accessories for Stucco/Plaster, CI/EIFS, DEFS & Drywall

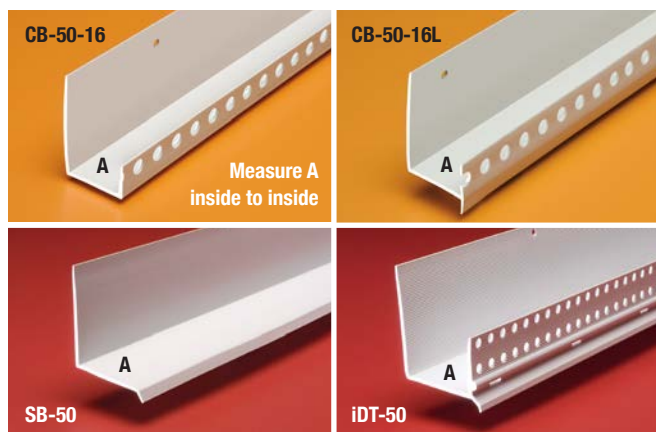
Corner Bead • Casing Beads • Starter Trac™

Paintable • 10 ft (3 m) Lengths • Non-Rusting



Corner Beads

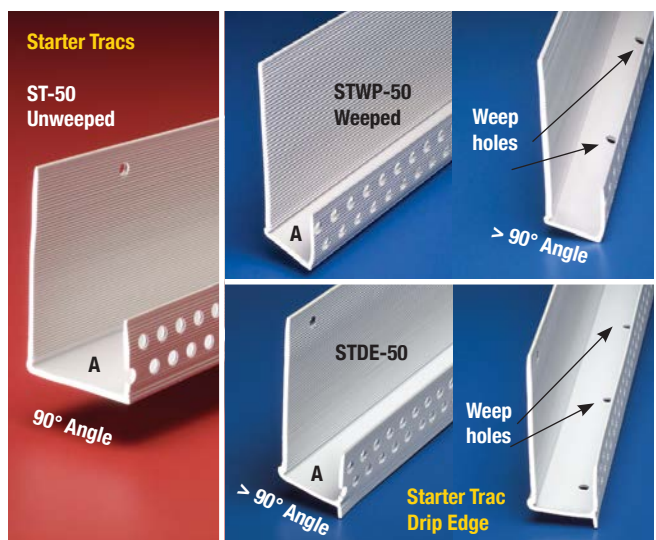
PRODUCT NUMBER	DESCRIPTION/ DIMENSIONS	PIECES /BOX
2209	Corner Bead with wide, grooved flanges and larger holes. 1-5/8" x 1-5/8" (41 mm x 41 mm)	100
4	Veneer Corner Bead *also in 8 ft (2.5 m) lengths 2-1/2" x 2-1/2" (64 mm x 64 mm) flanges	50
2209A	Arch Corner Bead ...the easy way to make arches pre-slotted 1-5/8" (41 mm) flange	100
2209MESH	Mesh Corner Bead *also in 8 ft (2.5 m) lengths with 4.5 ounce fire- and alkaline-resistant fiberglass attached to both legs; 3" (76 mm) on one leg, 5" (127 mm) on the other. 7/8" (22 mm) flange.	50



Casing Bead • Starter Trac™ • Drip Edges

PRODUCT NUMBER	DESCRIPTION/ DIMENSIONS	PIECES /BOX
CB-50-16	CB DEFS Casing Bead/Starter Trac Unweeped or weeped Dimension 'A' – 1/2" (13 mm)	60
CB-58-16	Dimension 'A' – 5/8" (16 mm)	60
CB-50-16L	CB Starter Trac Drip Edge Unweeped or weeped Dimension 'A' – 1/2" (13 mm)	60
CB-58-16L	Dimension 'A' – 5/8" (16 mm)	60
SB-50	Window/Door Drip Edge with 2" (51 mm) back flange Dimension 'A' – 1/2" (13 mm)	100
SB-58	Dimension 'A' – 5/8" (16 mm)	100
iDT-50	iDT Drip Trac™ with 2" (51 mm) back flange Dimension 'A' – 1/2" (13 mm)	35
iDT-58	Dimension 'A' – 5/8" (16 mm)	35

Measure 'A' inside to inside



Starter Trac™ Unweeped or Weeped PATENTED

PRODUCT NUMBER	DESCRIPTION/ DIMENSIONS	PIECES /BOX
ST-50	Dim 'A' – 1/2" (13 mm) • 90° Angle • Weep holes	35
ST-58	Dim 'A' – 5/8" (16 mm) • 90° Angle • Weep holes	35
STWP-50	Dim 'A' – 1/2" (13 mm) • Sloped > 90° • Weeped	35
STWP-58	Dim 'A' – 5/8" (16 mm) • Sloped > 90° • Weeped	35

Ideal for use where finished edge is exposed. Can be used as a Starter Trac or Casing Bead. 3/4" (19 mm) Front Return w/ striations, perforations for positive bonding of base to board. 3" (76 mm) nailing flange. *NO drip edge

Sloped base shelf. Weep holes move water out, away from system

Starter Trac™ Drip Edge

Striations, perforations on front return ensure positive bonding of base coat to board. 3" (76 mm) nailing flange. > 90° base shelf has weep holes spaced 3" (76 mm) o.c. to allow water to migrate from the system.

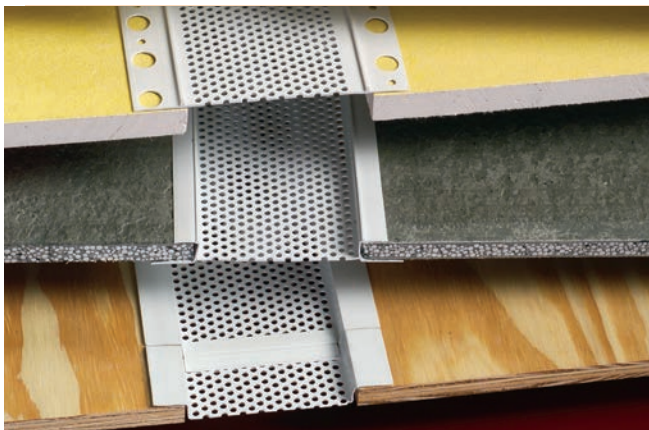
STDE-50	Dim 'A' – 1/2" (13 mm) • Sloped > 90° • Weeped	35
STDE-58	Dim 'A' – 5/8" (16 mm) • Sloped > 90° • Weeped	35

The base coat mesh should be lapped over the top of the perforated flanges and across all butt joints.

9051 NW 97 Terrace • Miami, Florida 33178 • 305/885-0561 • 800/327-7077 • FAX 305/887-2452

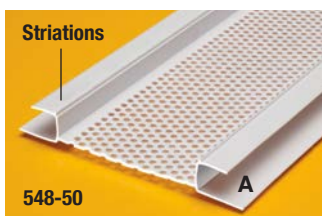
Soffit Vents

Optimal Air Flow and Vent Area · Non-Rusting · 10 ft (3 m) Lengths



Plastic Components offers a variety of non-rusting vents just for Direct Applied Finish Systems

- Rust free, damage-resistant alternative to metal vents
- 10' (3 m) Lengths, Connector clips included



Continuous Soffit Vent with Single Flange, Drop-in

PRODUCT NUMBER	VENT AREA	AIR FLOW PER LINEAR FT	PIECES /BOX
548-58HI	2-5/8" (67 mm)	14 sq inches (9,033 sq mm)	13

Continuous Soffit Vent with Double Flange

PRODUCT NUMBER	VENT AREA	AIR FLOW PER LINEAR FT	DIM A	PIECES /BOX
548-38			3/8" (10 mm)	13
548-50	2-5/8"	14 sq inches	1/2" (13 mm)	13
548-58	(67 mm)	(9,033 sq mm)	5/8" (16 mm)	13
548-75			3/4" (19 mm)	13
3548-50	3"	15 sq inches	1/2" (13 mm)	13
3548-58	(76 mm)	(9,678 sq mm)	5/8" (16 mm)	13
4548-50	4"	16 sq inches	1/2" (13 mm)	13
4548-58	(102 mm)	(10,323 sq mm)	5/8" (16 mm)	13
6548-50	6"	18 sq inches	1/2" (13 mm)	10
6548-58	(152 mm)	(11,614 sq mm)	5/8" (16 mm)	10

2-piece Soffit Vent with 90° Leg * Custom Sizes available

PRODUCT NUMBER	VENT AREA	AIR FLOW per LINEAR FT	DIM A	PIECES /BOX
F548-38 WF551			3/8" (10 mm)	13
F548-50 WF551	2-5/8"	14 sq inches	1/2" (13 mm)	13
F548-58 WF551	(67 mm)	(9,033 sq mm)	5/8" (16 mm)	13
F548-75 WF551			3/4" (19 mm)	13
F3548-50 WF551	3"	15 sq inches	1/2" (13 mm)	13
F3548-58 WF551	(76 mm)	(9,678 sq mm)	5/8" (16 mm)	13
F4548-50 WF551	4"	16 sq inches	1/2" (13 mm)	13
F4548-58 WF551	(102 mm)	(10,323 sq mm)	5/8" (16 mm)	13
F6548-50 WF551	6"	18 sq inches	1/2" (13 mm)	10
F6548-58 WF551	(152 mm)	(11,614 sq mm)	5/8" (16 mm)	10

Surface Mounted Soffit Vent

PRODUCT NUMBER	VENT AREA	AIR FLOW PER LINEAR FT	PIECES /BOX
SMV3	3" (76 mm)	15 sq inches (9,678 sq mm)	35
SMV4	4" (102 mm)	16 sq inches (10,323 sq mm)	35
SMV6	6" (152 mm)	18 sq inches (11,614 sq mm)	30

PLASTIC PCTM
COMPONENTS inc.

Manufacturers of PVC Accessories for Stucco/Plaster, CI/EIFS, DEFS & Drywall



The base coat mesh should be lapped over the top of the perforated flanges and across all butt joints.

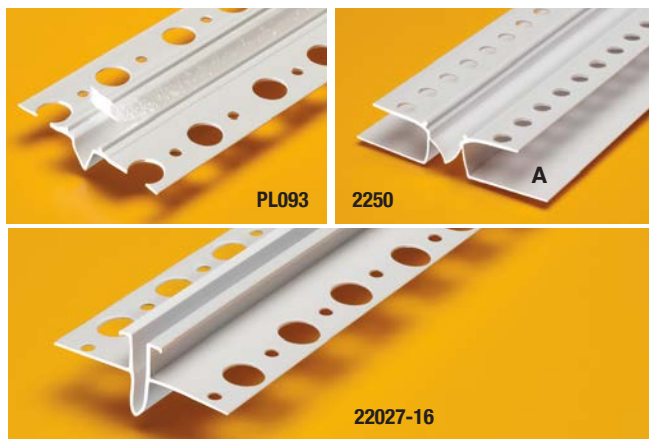
UV Resistant • Non-Rusting • Paintable **Control Joints**

for 1/2" (13 mm) or 5/8" (16 mm) Sheathing Board



Use our Control Joints to allow for stress relief and movement in Direct Applied Systems

- For help in reducing hairline cracks and cold joints
- Multiple reveal sizes create attractive architectural detail
- 10' (3 m) Lengths
- Meets ASTM standards D4216, D1784



Surface Mounted Control Joint with Removable Tape

PRODUCT NUMBER	DESCRIPTION	PIECES /BOX
PL093	Inverted 1/2" (13 mm) Expansion Joint 1/16" (2 mm) finish top w removable tape	60
PL093-75	Inverted 3/4" (19 mm) Expansion Joint w wide 'V' 1/16" (2 mm) finish top w removable tape	60

'M' Control Joint

PRODUCT NUMBER	REVEAL WIDTH	BOARD THICKNESS	PIECES /BOX
2250	1/2" (13 mm)	1/2" (13 mm)	25
2258	1/2" (13 mm)	5/8" (16 mm)	20

Surface Mounted 'V' Control Joint

PRODUCT NUMBER	FINISH THICKNESS	PIECES /BOX
22027-16	1/16" (2 mm)	50
22027-25	1/4" (6 mm)	35
22027-38	3/8" (10 mm)	25



The base coat mesh should be lapped over the top of the perforated flanges and across all butt joints.

9051 NW 97 Terrace • Miami, Florida 33178 • 305/885-0561 • 800/327-7077 • FAX 305/887-2452

www.plasticcomponents.com • orders@plasticcomponents.com

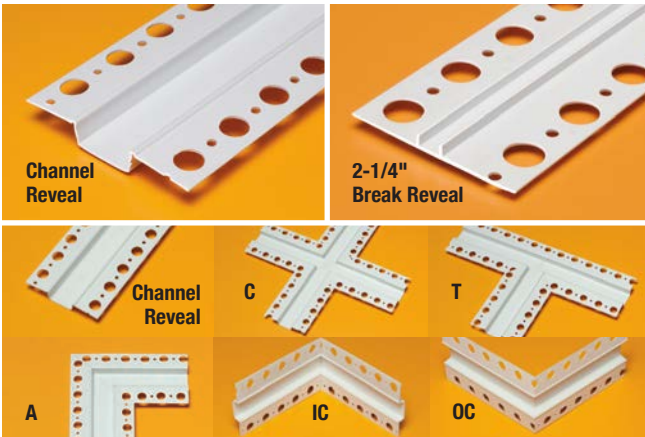
Aesthetic Reveals & Intersections

Paintable · UV Resistant · Non-Rusting · 10 ft (3 m) Lengths



The easy way to create attractive architectural detail in Direct Applied Finish Systems

- Multiple reveal dimensions with matching intersections that deliver aesthetically pleasing details
- 10' (3 m) Lengths
- Meets ASTM standards D4216, D1784



DEFS Aesthetic Channel Reveal

For 1/2" (13 mm) or 5/8" (16 mm) Sheathing Applications

PRODUCT NUMBER	REVEAL WIDTH	ADDITIONAL PRODUCT DETAIL	PIECES /BOX
2225	1/2" (13 mm)		30
2226	1" (25 mm)		35
2227	3/4" (19 mm)		35
2228	3/8" (10 mm)		30
2229	5/8" (16 mm)		35
2235	1-1/2" (38 mm)	Large and small holes on flange	30
2236	2" (51 mm)	Large and small holes on flange	30
2237	3" (76 mm)	Unpunched flange	20
2239	4" (102 mm)	Unpunched flange	20

'F' Series also available. Call Customer Service, 800.327.7077

Break Reveal

PRODUCT NUMBER	OVERALL WIDTH	DIMENSIONS/ PRODUCT DETAIL	PIECES /BOX
1552	2-1/4" flange (57 mm)	1/4" reveal width x 1/8" ground (6 mm x 3 mm)	50
1553	2-1/4" flange (57 mm)	1/2" reveal width x 1/8" ground (13 mm x 3 mm)	50
1554	2-1/4" flange (57 mm)	3/4" reveal width x 1/8" ground (19 mm x 3 mm)	50
1556	Wide flange 5-1/8" (130 mm)	3/8" reveal width x 1/8" ground (10 mm x 3 mm) Break reveal used in tilt wall market to cover joints.	35

DEFS Aesthetic Channel Reveal Intersections

PRODUCT NUMBER	REVEAL WIDTH	DEPTH 1/2" (13 mm) PRODUCT DETAIL	PIECES /BOX
2228	3/8" (10 mm)	To order, add product suffix.	25
2225	1/2" (13 mm)		25
2229	5/8" (16 mm)		25
2227	3/4" (19 mm)		25
2226	1" (25 mm)		25
2235	1-1/2" (38 mm)		25
2236	2" (51 mm)		25
2237	3" (76 mm)		25
2239	4" (102 mm)		25

C = Cross
T = T
A = Angle
EC = End Closure
OC = Outside Corner
IC = Inside Corner
 Examples: 2225IC (Inside Corner), 2225C (Cross), 2225A (Angle), etc

PLASTIC PCTM
COMPONENTS inc.

Manufacturers of PVC Accessories for Stucco/Plaster, CI/EIFS, DEFS & Drywall



The base coat mesh should be lapped over the top of the perforated flanges and across all butt joints.

Beads • Z Mold • Screeds

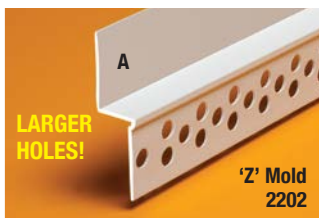
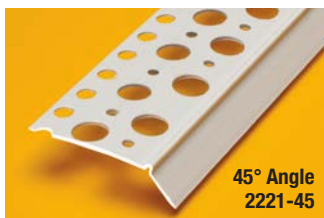
Paintable • 10 ft (3 m) Lengths • Non-Rusting



Save time – Get a Better Finish!

Beads, 'Z' Mold and Screeds protect sheathing edge ... Cover gaps on sheathing cut too short... Provide backing for sealant... keep water out of fascia and soffit areas... and provide a stop for stucco at plate line/stem wall.

- 10' (3 m) Lengths
- Meets ASTM standards D4216, D1784



45° Angle Termination Bead

PRODUCT NUMBER	DIMENSION/ DESCRIPTION	PIECES /BOX
2221-45	45° angled bead for use as a backing for sealant around any opening	100

Shadow Mold/'Z' Mold for 1/2" (13 mm) or 5/8" (16 mm) Board

PRODUCT NUMBER	DIM A FLANGE	DIMENSION PERFORATED FLANGE	PIECES /BOX
2202	1/2" (13 mm)	1/2" (13 mm) or more	50
2203	3/4" (19 mm)	1/2" (13 mm) or more	50
2204	1" (25 mm)	1/2" (13 mm) or more	50

Surface Mounted 'J' Bead for Exterior Applications

PRODUCT NUMBER	BOARD THICKNESS	DIMENSION/ PERFORATED FLANGE	PIECES /BOX
2201-38	3/8" (10 mm)	1-1/2" (38 mm) wide	50
2201-50	1/2" (13 mm)	perforated, grooved flange	50
2201-58	5/8" (16 mm)		50

Surface Mounted 'L' Bead for Exterior Applications

PRODUCT NUMBER	BOARD THICKNESS	DIMENSION/ PERFORATED FLANGE	PIECES /BOX
2221-38	3/8" (10 mm)		50
2221-50	1/2" (13 mm)	1-1/2" (38 mm) wide	50
2221-58	5/8" (16 mm)	perforated, grooved flange	50
2221-1	1" (25 mm)		50

Soffit Drip Screed for 1/16" (2 mm) Finish

PRODUCT NUMBER	BOARD THICKNESS	DIMENSION/ REVEAL WIDTH	PIECES /BOX
2254-50	1/2" (13 mm)	1/2" (13 mm)	25
2254	5/8" (16 mm)	1/2" (13 mm)	25

Foundation Weep Screed

PRODUCT NUMBER	FINISH THICKNESS	DIMENSION/ DESCRIPTION	PIECES /BOX
632-38	3/8" (10 mm)	3-1/2" (89 mm) nailing flange	35



The base coat mesh should be lapped over the top of the perforated flanges and across all butt joints.

9051 NW 97 Terrace • Miami, Florida 33178 • 305/885-0561 • 800/327-7077 • FAX 305/887-2452

Trims for Direct Applied Systems

Non-Rusting Moisture Control



These accessories help to control moisture for a better, good-looking job

- Non-rusting, UV resistant PVC
- Paintable
- 10' (3 m) Lengths
- Meets ASTM standards D4216, D1784



Casing Bead/Starter Trac™

PRODUCT NUMBER	DIMENSION/ DESCRIPTION	PIECES /BOX
SX-187-16	Reinforced Casing Bead with 1-5/8" (41 mm) perforated flange and 3/16" (5 mm) lip	75

IN BOX™

Low Profile, Recessed Electrical Box for DEFS and EIFS wall systems

PRODUCT NUMBER	FOR DEFS & EIFS WALL SYSTEMS	FLANGE STYLE	COVER COLOR	PIECES /BOX
PCDBVME1C	for 1-1/2" (38 mm)	Fixed	Clear	4
PCDBVME1W	for 1-1/2" (38 mm)	Fixed	White	4
PCDBVMA1C	for systems up to 2" (51 mm) thick	Adjustable	Clear	4
PCDBVMA1W	for systems up to 2" (51 mm) thick	Adjustable	White	4

PCDBVMA1W

PCDBVME1W

PLASTIC **PC**™
COMPONENTS inc.



Sill Wedge for positive slope at window sill

PRODUCT NUMBER	SILL WEDGE WIDTH	DESCRIPTION/ PRODUCT DETAIL	PIECES /BOX
SW-3-78	3" (76 mm)	Window frame sits on 1/4" sloped sill wedge. Moisture drains out at the bottom of system	30
SW-5-78	5" (127 mm)		30

Vent Screen Trac™

PRODUCT NUMBER	BOARD THICKNESS	DIMENSIONS/ PRODUCT DETAIL	PIECES /BOX
VST-50	1/2" (13 mm)	Trac for DEFS systems with double row of drainage holes on back flange.	35
VST-58	5/8" (16 mm)	1-1/8" (29 mm) return face flange. 4-hole pattern for superior bond of base coat to board. 2" (51 mm) nailing flange with nail holes set at 4" (102 mm) o.c.	35



Manufacturers of PVC Accessories for Stucco/Plaster, CI/EIFS, DEFS & Drywall

9051 NW 97 Terrace • Miami, Florida 33178

305/885-0561 • FAX 305/887-2452

800/327-7077

www.plasticcomponents.com • orders@plasticcomponents.com

DIRAPP_1023
1M

©2023 Plastic Components, Inc.