



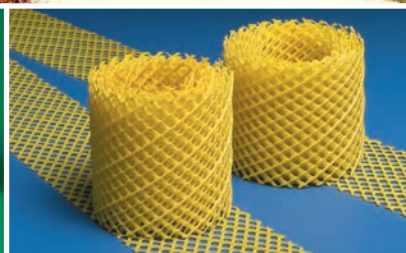
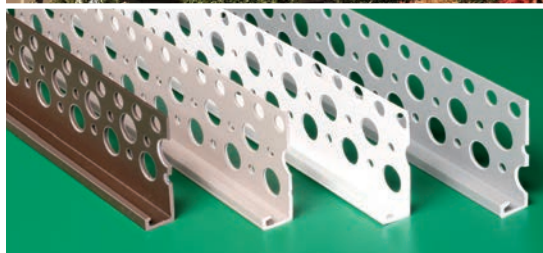
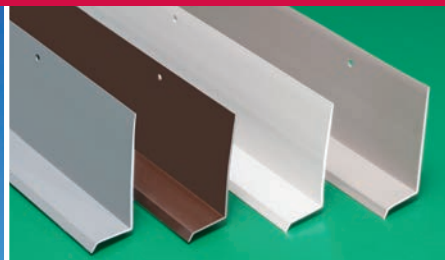
Made in the USA

Since 1969

**PLASTIC *PC*™**  
**COMPONENTS** inc.

Linked   
follow us

# PVC ACCESSORIES



## for Stone Veneer



# Plastic Components

Florida-based **Plastic Components** is the originator and designer of many innovative trims, and since 1969, has manufactured quality plastic trims and accessories for the construction industry that solve problems created by standard metal.



Our nearly 700 line items include corner beads, control joints, vents, slip joints, reveals, and more for continuous insulation and exterior insulated finish systems (CI/EIFS), direct applied (DEFS), stucco, **stone veneer** and drywall.

From freezing cold to extreme heat, Plastic Components' PVC products deliver optimal results – good looks, easy handling, moisture management, reduced labor costs and superior field performance.

Our trims are tested and listed with Intertek Testing Services/Warnock Hersey to meet or exceed the strict standards set by ASTM.



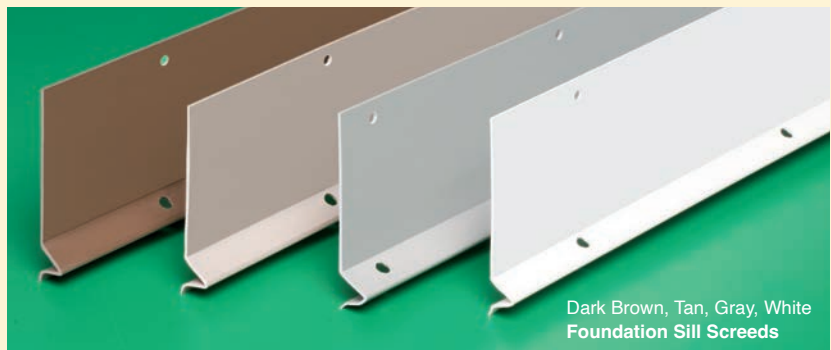
## Colored PVC Trims for Stone Veneer

Save time! They feature permanent, molded-in color that eliminates painting with NO chipping or color loss.

**PLASTIC *PC*™**  
**COMPONENTS inc.**



**TRIMS IN FOUR COLORS**  
**for Stone Veneer applications**  
**NO CHIPPING – NO COLOR LOSS**



Dark Brown, Tan, Gray, White  
Foundation Sill Screeds



**PERMANENT,**  
**MOLDED-IN**  
**COLOR**

**MEETS ASTM**  
**D4216, D1784**  
**C1861, C1063**  
**and C926**

Contact us at **800-327-7077** or **plasticcomponents.com** for assistance.

**Manufacturers of PVC Accessories for Stucco/Plaster, CI/EIFS, DEFS & Drywall**



# Products for Stone Veneer

## Product Page No.

### PVC TRIMS IN FOUR COLORS

**Termination Bead** ..... 4  
Weeped and Unweeped

**Ultra Casing Bead w/ moisture seal** ..... 6  
Built-in red moisture seal for better moisture management and easier inspections

**Drip Edge w/ 3 inch Back Flange** ..... 5  
For a finished edge between stone veneer and other substrate materials

**Foundation Weep Screeds** ..... 7  
Provides a stop for stone veneer at the plate line or stem wall



White



Tan



Gray

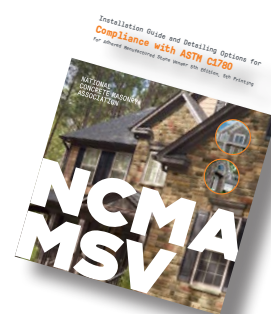


Dark Brown

**COLOR TRIMS  
ELIMINATE PAINTING!**



Refer to NCMA  
MSV guide for  
installation and  
detailing options



## ACCESSORIES FOR A BETTER STONE VENEER INSTALLATION

### NON-RUSTING PLASTIC LATH

**Ultra-Lath Plus®** 1/4" self-furred ..... 8  
Complies with Florida Building Code, ASTM.  
Passes NFPA285 Multi-story Fire Test



### DRAINAGE/VENTILATION SYSTEM

**Ultra-Drain Mat™** ..... 8  
Keeps moisture from trapping inside wall



### ELASTOMERIC SEALANT

**Tower Tech<sup>2</sup>™** one-component, high-performance gun-grade sealant offers superior adhesion and flexibility. 800% elongation.

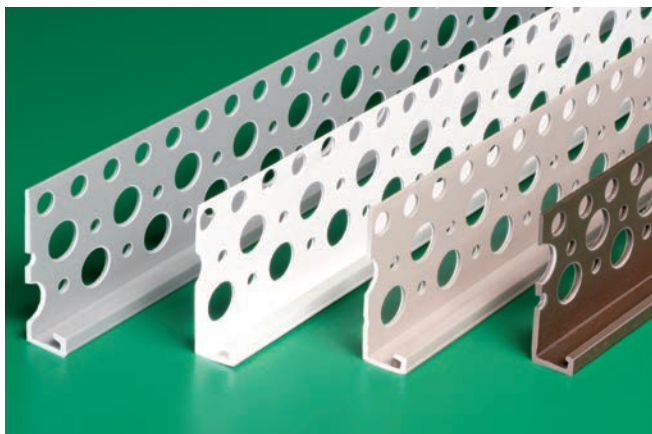


9051 NW 97 Terrace • Miami, Florida 33178 • 305/885-0561 • 800/327-7077 • FAX 305/887-2452

www.plasticcomponents.com • orders@plasticcomponents.com

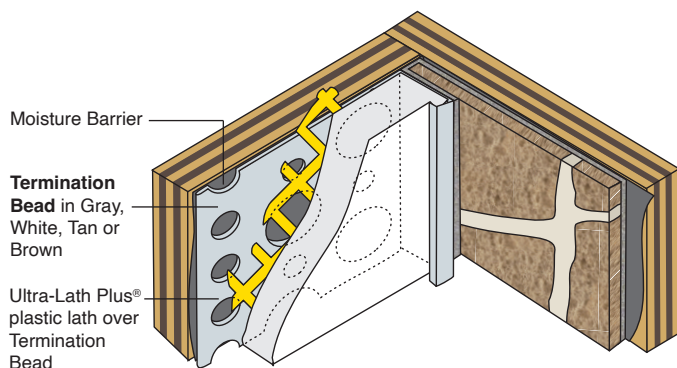
# Colored Termination Bead (Weeped or Unweeped)

with 1-3/4" (44 mm) perforated back flange



**Provides a finished edge between the stone veneer and other substrate materials**

- Compatible with vinyl, wood, stucco, cementitious siding
- 1-3/4" (44 mm) perforated back flange
- Four permanent molded-in colors
- Meets ASTM standards D4216, D1784, C1861, C1063, C926



PRODUCT NUMBER	GROUND	DESCRIPTION /COLOR	PIECES /BOX
1050	1/2" (13 mm)	White	75
1058	5/8" (16 mm)		75
1075	3/4" (19 mm)		75
1078	7/8" (22 mm)		75
1100	1" (25 mm)		50
1050TAN	1/2" (13 mm)	Tan	75
1058TAN	5/8" (16 mm)		75
1075TAN	3/4" (19 mm)		75
1078TAN	7/8" (22 mm)		75
1100TAN	1" (25 mm)		50
1050GRAY	1/2" (13 mm)	Gray	75
1058GRAY	5/8" (16 mm)		75
1075GRAY	3/4" (19 mm)		75
1078GRAY	7/8" (22 mm)		75
1100GRAY	1" (25 mm)		50
1050DB	1/2" (13 mm)	Dark Brown	75
1058DB	5/8" (16 mm)		75
1075DB	3/4" (19 mm)		75
1078DB	7/8" (22 mm)		75
1100DB	1" (25 mm)		50

10' (3 m) Lengths

**Add suffix "WP" to order with Weep Holes. Example: 1050DBWP**

Caulk all butt joints, intersections and ends at the time of installation with an elastomeric sealant, such as Plastic Components' Tower Tech<sup>2</sup>™ (PC-TS00215).



**PLASTIC PC<sup>TM</sup>**  
**COMPONENTS inc.**

**Manufacturers of PVC Accessories for Stucco/Plaster, CI/EIFS, DEFS & Drywall**

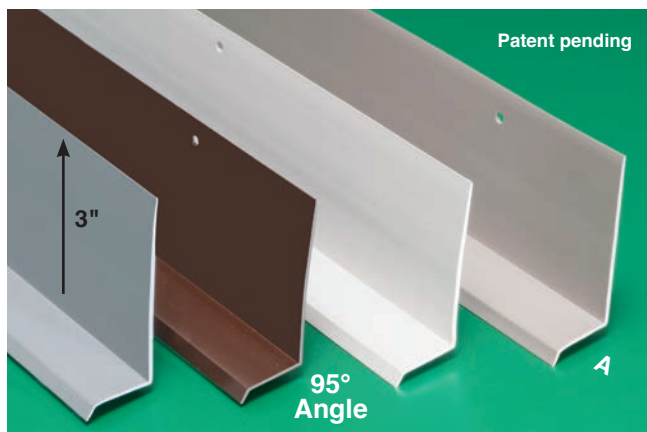


UER #0284



# Drip Edge/Starter Trac™

with 3" (76 mm) back flange • 95° Angle



**Provides a finished edge between the stone veneer and other substrate materials**

- Compatible with vinyl, wood, stucco, cementitious siding
- 3" (76 mm) back flange
- Four permanent molded-in colors
- Meets ASTM standards D4216, D1784, C1861, C1063, C926



PRODUCT NUMBER	GROUND DIMENSION A	COLOR	PIECES /BOX
SB-EMT75	3/4" (19 mm)	White	30
SB-EMT1	1" (25 mm)		30
SB-EMT15	1-1/2" (38 mm)		30
SB-EMT2	2" (51 mm)		30
SB-EMT75TAN	3/4" (19 mm)	Tan	30
SB-EMT1TAN	1" (25 mm)		30
SB-EMT15TAN	1-1/2" (38 mm)		30
SB-EMT2TAN	2" (51 mm)		30
SB-EMT75GRAY	3/4" (19 mm)	Gray	30
SB-EMT1GRAY	1" (25 mm)		30
SB-EMT15GRAY	1-1/2" (38 mm)		30
SB-EMT2GRAY	2" (51 mm)		30
SB-EMT75DB	3/4" (19 mm)	Dark Brown	30
SB-EMT1DB	1" (25 mm)		30
SB-EMT15DB	1-1/2" (38 mm)		30
SB-EMT2DB	2" (51 mm)		30

10' (3 m) Lengths

Caulk all butt joints, intersections and ends at the time of installation with an elastomeric sealant, such as Plastic Components' Tower Tech<sup>2</sup>™ (PC-TS00215).



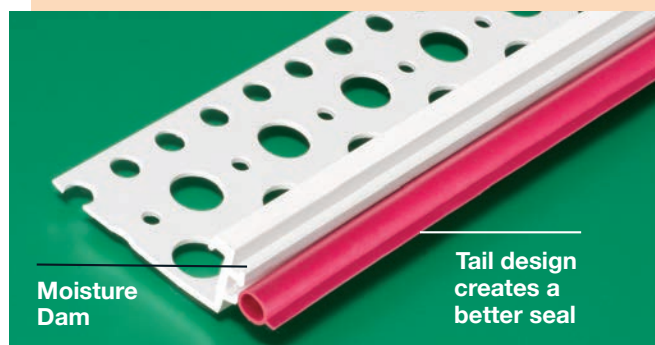
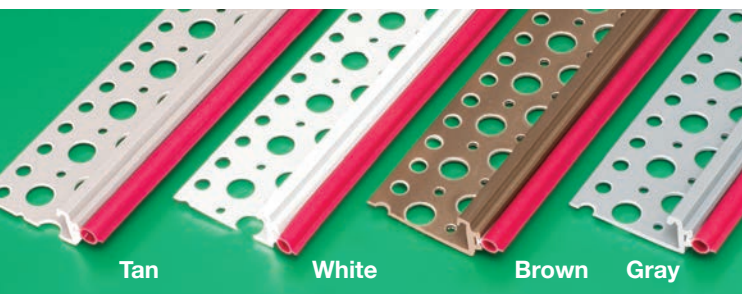
Refer to NCMA MSV guide  
for installation and detailing options

9051 NW 97 Terrace • Miami, Florida 33178 • 305/885-0561 • 800/327-7077 • FAX 305/887-2452

[www.plasticcomponents.com](http://www.plasticcomponents.com) • [orders@plasticcomponents.com](mailto:orders@plasticcomponents.com)

# Ultra Casing Bead 4 Colors · 1-3/4" (44 mm) perforated flange

## Built-in Red Moisture Seal for improved water management



**Built-in moisture seal improves water management in stone veneer and stucco applications; creates consistent spacing around window and door frames**

- Keeps moisture from entering around doors, windows and dissimilar claddings
- 1-3/4" (44 mm) perforated flange
- Red color seal for easier inspections
- Meets ASTM standards  
D4216, D1784, C1861, C1063, C926



PRODUCT NUMBER	GROUND	COLOR	PIECES /BOX
1050UCB	1/2" (13 mm)	White	75
1058UCB	5/8" (16 mm)		75
1075UCB	3/4" (19 mm)		75
1078UCB	7/8" (22 mm)		50
1100UCB	1" (25 mm)		50
1050UCBTAN	1/2" (13 mm)	Tan	75
1058UCBTAN	5/8" (16 mm)		75
1075UCBTAN	3/4" (19 mm)		75
1078UCBTAN	7/8" (22 mm)		50
1100UCBTAN	1" (25 mm)		50
1050UCBGRAY	1/2" (13 mm)	Gray	75
1058UCBGRAY	5/8" (16 mm)		75
1075UCBGRAY	3/4" (19 mm)		75
1078UCBGRAY	7/8" (22 mm)		50
1100UCBGRAY	1" (25 mm)		50
1050UCBDB	1/2" (13 mm)	Dark Brown	75
1058UCBDB	5/8" (16 mm)		75
1075UCBDB	3/4" (19 mm)		75
1078UCBDB	7/8" (22 mm)		50
1100UCBDB	1" (25 mm)		50

10' (3 m) Lengths

Caulk all butt joints, intersections and ends at the time of installation with an elastomeric sealant, such as Plastic Components' Tower Tech<sup>2</sup>™ (PC-TS00215).

**PLASTIC PC<sup>TM</sup>**  
**COMPONENTS inc.**

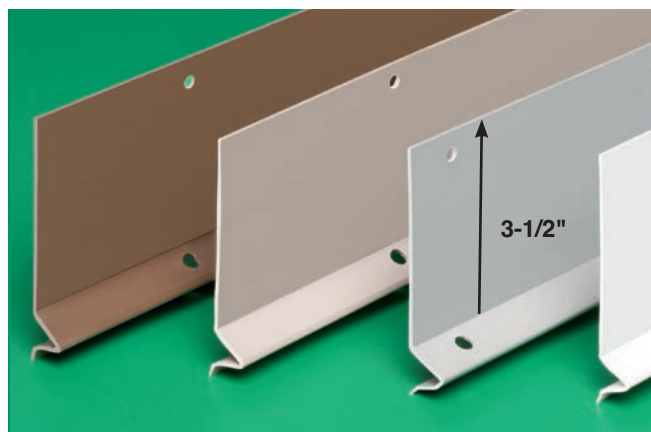
**Manufacturers of PVC Accessories for Stucco/Plaster, CI/EIFS, DEFS & Drywall**



UER #0284

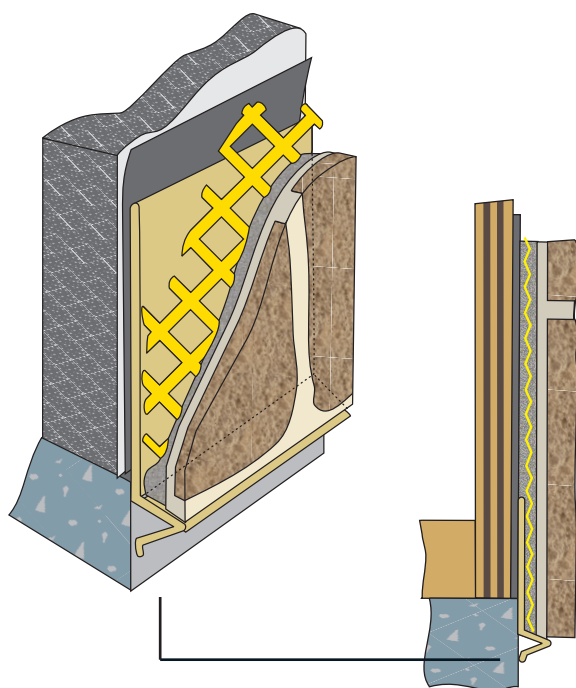
# Foundation Weep Screeds for Framing Applications

## with 3-1/2" (89 mm) back flange



Designed for installations at the plate line or stem wall, Foundation Weep Screeds provide a stop for stone veneer.

- Allows moisture to migrate down and away from the wall
- 3-1/2" (89 mm) back flange
- Permanent colors – No peeling or chipping
- Meets ASTM standards D4216, D1784, C1861, C1063, C926



**632 series  
Foundation Weep  
Screed**

PRODUCT NUMBER	GROUND	COLOR	PIECES /BOX
632-50	1/2" (13 mm)	White	35
632-58	5/8" (16 mm)		35
632-75	3/4" (19 mm)		35
632-78	7/8" (22 mm)		30
632-100	1" (25 mm)		25
632-50TAN	1/2" (13 mm)	Tan	35
632-58TAN	5/8" (16 mm)		35
632-75TAN	3/4" (19 mm)		35
632-78TAN	7/8" (22 mm)		30
632-100TAN	1" (25 mm)		25
632-50GRAY	1/2" (13 mm)	Gray	35
632-58GRAY	5/8" (16 mm)		35
632-75GRAY	3/4" (19 mm)		35
632-78GRAY	7/8" (22 mm)		30
632-100GRAY	1" (25 mm)		25
632-50DB	1/2" (13 mm)	Dark Brown	35
632-58DB	5/8" (16 mm)		35
632-75DB	3/4" (19 mm)		35
632-78DB	7/8" (22 mm)		30
632-100DB	1" (25 mm)		25

10' (3 m) Lengths

Caulk all butt joints, intersections and ends at the time of installation with an elastomeric sealant, such as Plastic Components' Tower Tech<sup>2</sup>™ (PC-TS00215).



Refer to NCMA MSV guide  
for installation and detailing options

9051 NW 97 Terrace • Miami, Florida 33178 • 305/885-0561 • 800/327-7077 • FAX 305/887-2452

[www.plasticcomponents.com](http://www.plasticcomponents.com) • [orders@plasticcomponents.com](mailto:orders@plasticcomponents.com)



# ACCESSORIES for Stone Veneer Applications

Manage moisture. Get a better, water-resistant installation.



ULTRA-LATH PLUS



ELASTOMERIC SEALANT

## Ultra-Lath Plus® Rustproof Plastic Lath

1/4" self-furred in sheets, rolls and strips.

Meets ASTM • COMPLIES with Florida Building Code.

**PRODUCT NUMBER** **ULTRA-LATH PLUS® PLASTIC LATH**

1/4" SELF-FURRED RUSTPROOF PLASTIC LATH		
<b>PDM2796-25</b>	<b>SHEETS</b> 27" x 96" (686 mm x 2.4 m) <b>PACKAGING</b> 10 sheets per bundle 180 sq ft (16.8 m <sup>2</sup> ) per bundle <b>QTY PER PALLET</b> 20 bundles per pallet 3,600 sq ft (334.5 m <sup>2</sup> ) per bundle	
<b>PDM2796PB-25</b>	<b>Asphalt Impregnated PAPER-BACKED SHEETS</b> 27" x 96" (686 mm x 2.4 m) <b>PACKAGING</b> 10 sheets per bundle 180 sq ft (16.8 m <sup>2</sup> ) per bundle <b>QTY PER PALLET</b> 20 bundles per pallet 3,600 sq ft (334.5 m <sup>2</sup> ) per bundle	
<b>PDMR-25</b>	<b>ROLLS</b> 27" x 75' (686 mm x 22.9 m) <b>PACKAGING</b> 10 sheets per bundle 168 sq ft (15.6 m <sup>2</sup> ) per roll <b>QTY PER PALLET</b> 3,024 sq ft (281 m <sup>2</sup> ) per pallet	
<b>STRIP-LATH™</b>	<b>STRIPS</b> of Ultra-Lath Plus lath	<b>PIECES PER BOX</b>
<b>PDM3-25</b>	3" (76 mm) w x 96" (2.4 m)	50
<b>PDM4-25</b>	4" (102 mm) w x 96" (2.4 m)	50
<b>PDM6-25</b>	6" (152 mm) w x 96" (2.4 m)	50
<b>PDM8-25</b>	8" (203 mm) w x 96" (2.4 m)	35

## Ultra Drain Mat™ Drainage mat, ventilation system



ULTRA DRAIN MAT

Durable fabric-backed, 2-ply polymer

PRODUCT NUMBER	THICKNESS	ROLL DIMENSION/ COVERAGE	ROLLS /PALLET
ULTRA DRAIN MAT™			
<b>UDM-25</b>	.25" (6 mm)	39" x 61.5' (99 cm x 18.75 m) 200 sf (18.58 m <sup>2</sup> )	18
<b>UDM-40</b>	.40" (10 mm)	39" x 40' (99 cm x 12.2 m) 130 sf (12.08 m <sup>2</sup> )	18

## Tower Tech<sup>2</sup>™ Gun-Grade Elastomeric Sealant

Reliable caulking of butt joints, intersections, ends and corners in projects that use Plastic Components' PVC accessories.

Forms a flexible, airtight and water-resistant seal against moisture.

Superior adhesion and flexibility.

800% elongation.

Non-yellowing white.

No 'shiners' or paint discoloration.

**Non Yellowing Elastomeric sealant**



### TOWER TECH<sup>2</sup>™

**PC-TS00215** 12 tubes/box  
10.1 oz per tube (299 mL)

**PLASTIC PC<sup>TM</sup>**  
**COMPONENTS<sup>inc.</sup>**



UER #0284

**Manufacturers of PVC Accessories for Stucco/Plaster, CI/EIFS, DEFS & Drywall**

9051 NW 97 Terrace • Miami, Florida 33178

305/885-0561 • FAX 305/887-2452

800/327-7077

[www.plasticcomponents.com](http://www.plasticcomponents.com) • [orders@plasticcomponents.com](mailto:orders@plasticcomponents.com)

SV0923  
1M

©2023 Plastic Components, Inc