



Made in the USA

Since 1969

PLASTIC *PC*™
COMPONENTS inc.

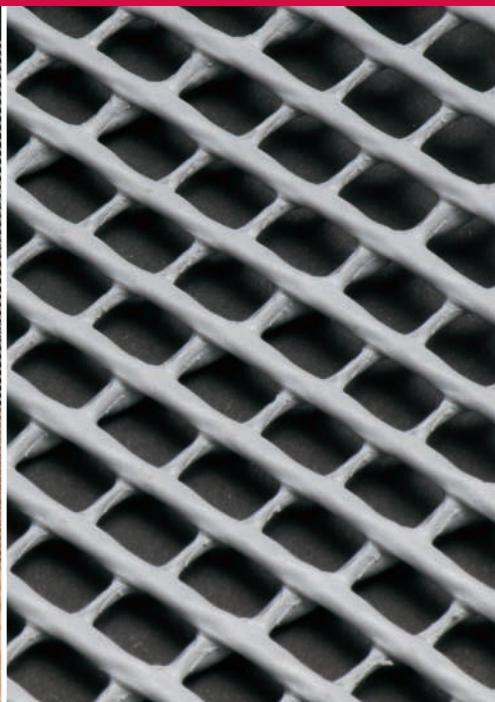
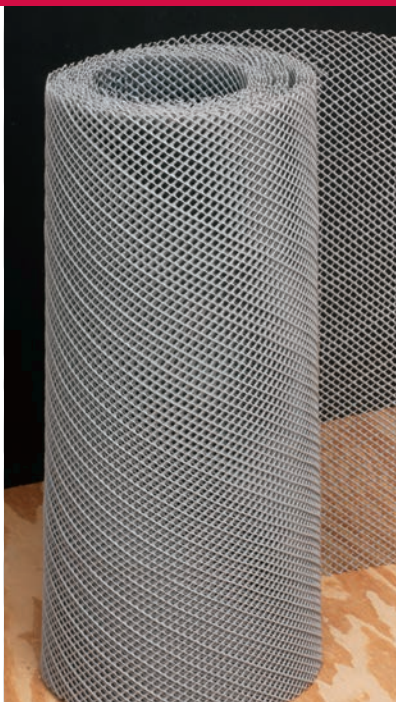
Linked 





follow us

ULTRA-LATH®



**Lightweight, Non-corroding
Plastic Tile Underlayment**

Plastic Components

Since 1969, Florida-based **Plastic Components** has manufactured quality plastic trims and accessories for the construction industry that provide a reliable, non-corrosive alternative to standard metal.

From freezing cold to extreme heat, Plastic Components' PVC products deliver good looks, easy handling, moisture management, reduced labor costs and superior field performance.

Our nearly 700 line items include corner beads, control joints, vents, slip joints, reveals, lath, and more for continuous insulation and exterior insulated finish systems (CI/EIFS), direct applied (DEFS), stucco, stone veneer and drywall.

We also offer plastic lath for use as a tile underlayment.

Plastic Components' ULTRA-LATH® plastic lath is a lightweight, non-corroding, alkali-resistant plastic underlayment used as an alternative to traditional metal lath.

Features • Benefits

- Lightweight underlayment for interior floor applications
- Easier to work with than traditional metal laths
- Unaffected by salt, moisture and chemicals in tile-setting products

Uses

- Most interior residential floor installations over plywood subfloors
- Compatible with most electric radiant-heated floor systems
- For the installation of tile over properly prepared and approved existing vinyl flooring over substrates meeting approved criteria

PLASTIC *PC*™
COMPONENTS inc.

For Interior Tile and Stone Applications

Surface Preparation

Check floor joist and subfloor for movement, missed fasteners, lack of support and required spacing between ULTRA-LATH sheets, typically 1/8" (3 mm). Correct spacing where necessary. Ensure that the substrate is structurally sound and free of excessive movement.

Refer to MAPEI's "Surface Preparation Requirements", or similar for details regarding acceptable subfloors and proper surface preparation.

See illustrations on back for specific requirements.

ULTRA-LATH® Application

- 1 Lay ULTRA-LATH over the substrate **right-side down**. Cut to fit. Butt seams lightly together. **DO NOT OVERLAP**. Offset Ultra-Lath seams 6" (15 cm) from subfloor plywood seams.
- 2 Fasten ULTRA-LATH to plywood with hot-dipped galvanized roofing nails at least 1" (2.5 cm) long. A pneumatic or electric stapler with non-corrosive staples can also be used.

Use of a hammer tackler is also acceptable but additional stapling may be required for ULTRA-LATH to lie flat.

Staple ULTRA-LATH directly to the plywood substrate with staples that are at least 1/2" (13 mm) in crown width and 9/16" (14 mm) in length. Staple every 4" to 6" (10 to 15 cm) in each direction in the center, and every 2" to 4" on seams and perimeter.

For installations over vinyl flooring, use longer staples: 5/8" (16 mm) minimum, to penetrate the plywood. Staple in a fan pattern to minimize creasing and bunching of ULTRA-LATH.

- 3 Provide for **expansion and control joints** as specified per TCNA Method EJ171, or TTMAC Specification Guide 09 30 00, Detail 301MJ. Do not cover expansion joints.
- 4 Use ULTRA-LATH with MAPEI mortar, rapid-set mortar, self-leveling underlayments, or similar. See applicable manufacturers' technical data sheets.

Limitations

- DO NOT...
- Use with perimeter-spread or cushioned-backed vinyl
 - Use dry-pack or other manufacturers' preparation products
 - Use as a firewall system
 - Install over substrates containing asbestos

Wood subfloors must be dry to acceptable industry moisture standards. High moisture content in subfloors reduces fastening strength and generates significant stress movement as plywood dries.



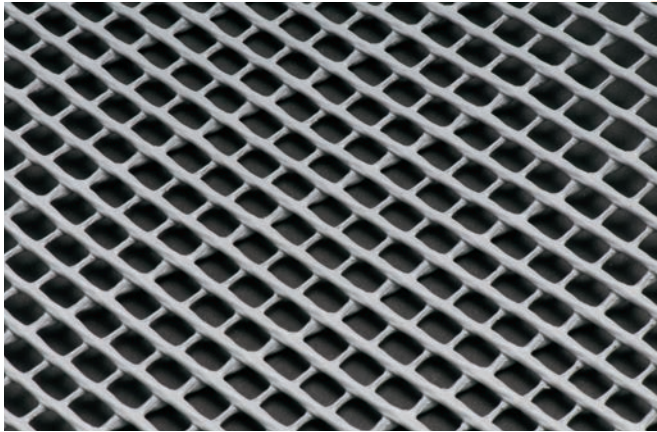
1 Put ULTRA-LATH on the substrate right-side down

Contact us at **800-327-7077** or **plasticcomponents.com** for assistance.

Manufacturers of PVC Accessories for the Construction Industry

ULTRA-LATH® Plastic Lath

Non-corrosive • Lightweight Tile Underlayment



Use as an underlayment for tile. Plastic ULTRA-LATH is the reliable alternative to traditional metal laths.

- For interior floor applications, over plywood subfloors
- Lightweight - Easy to handle and cut
- Non-corrosive, chemical-resistant
- 1/8" self-furred
- High compressive strength



2 Fasten ULTRA-LATH to plywood substrate



3 Apply one- or two-step mortar

Refer to TCNA manuals for additional details, information and specifications.



Non-corrosive

ULTRA-LATH® Plastic Lath Underlayment

1/8" self-furred • Overall thickness: 3/16" (4.7625 mm)

PRODUCT NUMBER	DESCRIPTION	PACKAGING	PALLET QTY
PDM2796	SHEETS	10 sheets/bundle	25 bundles
	27" x 96" (686 mm x 2.4 m)	180 sq ft (16.8 m ²)	4,500 sq ft (418 m ²)
PDMR	ROLLS	225 sq ft	18 bundles
	27" x 100' (686 mm x 30.5 m)	per roll (21 m ²)	4,050 sq ft (376.25 m ²)

9051 NW 97 Terrace • Miami, Florida 33178 • 305/885-0561 • 800/327-7077 • FAX 305/887-2452

ULTRA-LATH® Plastic Lath Tile Underlayment

Flooring System Recommendations for Tile & Stone Installations

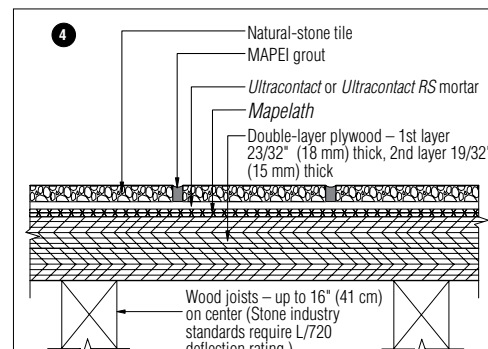
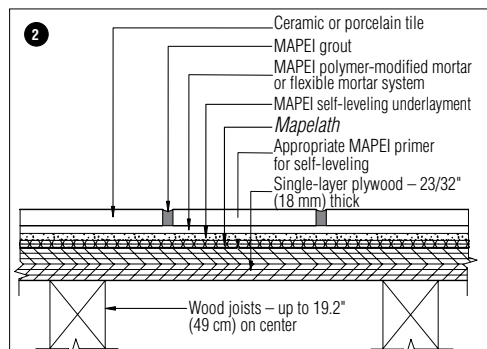
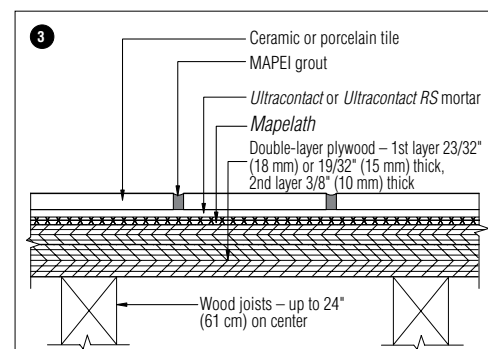
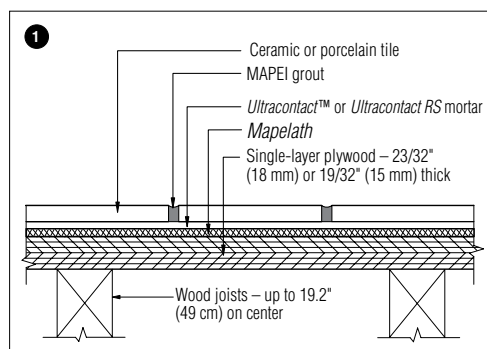
For use of ULTRA-LATH as a mechanical bond to substrate

Note for Mortar column:
Use MAPEI products, or similar

Substrate	Layers	1st Layer	2nd Layer	Joist Span	Mortar	Installation Type	Illustration
Exterior-grade plywood	1	Tongue and groove 19/32" (15 mm)	N/A	19.2" (49 cm)	<i>Ultracontact</i> or <i>Ultracontact RS</i>	Ceramic or porcelain tile	#1
Exterior-grade plywood	1	23/32" (18 mm)	N/A	19.2" (49 cm)	<i>Ultracontact</i> or <i>Ultracontact RS</i>	Ceramic or porcelain tile	#1
OSB (oriented strand board)	1	23/32" (18 mm)	N/A	19.2" (49 cm)	<i>Ultracontact</i> or <i>Ultracontact RS</i>	Ceramic or porcelain tile	#1
Exterior-grade plywood	1	23/32" (18 mm)	N/A	19.2" (49 cm)	Any MAPEI polymer-modified or flexible mortar system	Ceramic or porcelain tile	#2
Exterior-grade plywood	2	Tongue and groove 23/32" (18 mm) or 19/32" (15 mm)	3/8" (10 mm)	24" (61 cm)	<i>Ultracontact</i> or <i>Ultracontact RS</i>	Ceramic or porcelain tile	#3
Exterior-grade plywood	2	Tongue and groove 23/32" (18 mm)	19/32" (15 mm)	16" (41 cm)	<i>Ultracontact</i> or <i>Ultracontact RS</i>	Natural stone	#4

Note for Illustrations:
Use MAPEI products, or similar

Refer to TCNA manuals for additional details, information and specifications.



PLASTIC *PC*™
COMPONENTS inc.

Manufacturers of PVC Accessories for the Construction Industry

9051 NW 97 Terrace • Miami, Florida 33178

305/885-0561 • FAX 305/887-2452

800/327-7077

www.plasticcomponents.com • orders@plasticcomponents.com

ULATH_0724
1M

©2024 Plastic Components, Inc.